

# LCA25 Series

## Linear Actuator

30G acceleration  
Control force on high cycle applications  
Long life, over 100million cycle

### LCA25 Series

Dimensions [mm]	25 x 55 x 70 (Depends on stroke)
Stroke [mm]	10 +1/-0
Peak Force [N]	8 - 22
Encoder Resolution [µm]	5 (standard) 1 & 0.1 (Options)

SMAC's Patented 'Soft-Land' Technology  
Fully programmable in force, position and velocity  
Ideal for high cycle applications  
Linear slide models available



## Applications



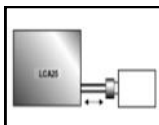
Ejecting/Rejection  
Diverting/Sorting



Bottle filling/  
Liquid Nitrogen  
Dosing



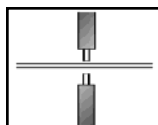
Cup Dispensing



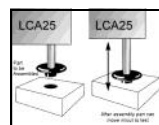
Scanning  
(High cycle)



Switch Test



Thickness  
Measurement



Small parts  
assembly

# SMAC

## Moving Coil Actuators

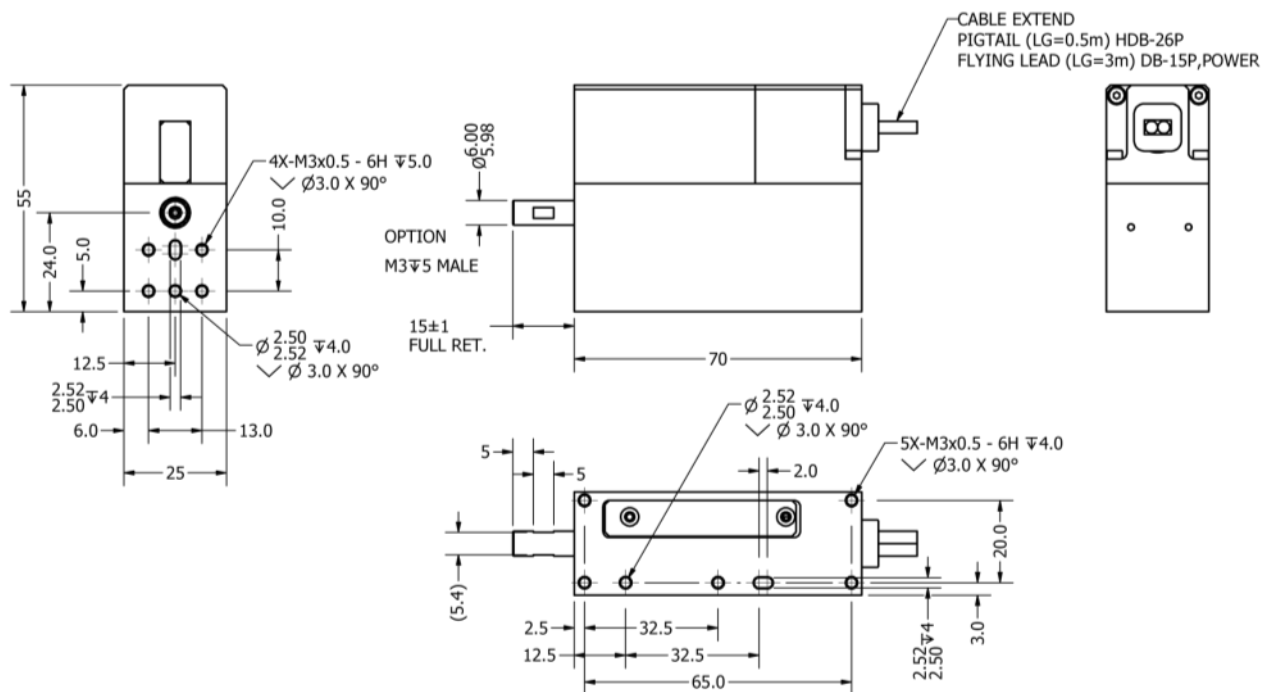
## PART NUMBERING

MODEL	SERIES	STROKE			VOLT ENCODER		SHAFT	VACUUM	SPRING	CABLE						
LCA	25	0	1	0				V			M	O	D			
		1 = 24 vdc 6 COIL			1 = 1.0µm		B = BLANK	SA=0g payload, vertical, full return			3= Flying Lead					
		3 = 48 vdc 6 COIL			5 = 5.0µm		F = FEMALE	SB=50g payload, vertical, full return			5= Pigtail					
		5 = 24 vdc SINGLE COIL			2 = 0.1µm		M = MALE	SC=100g payload, vertical, full return								
		7 = 48 vdc SINGLE COIL					C=CUSTOM	SD=0g payload, vertical, counter balance								
								SE=50g payload, vertical, counter balance								
								SF=100g payload, vertical, counter balance								

## SPECIFICATION

Dimension [mm]:	55 x 70 x 25 (10mm stroke, single coil)	Linear stroke [mm]:	10, 25, 50, 100 and 200 (+1/-0)
Peak force [N]:	8 - 22	Force constant [N/A]:	6 - 14.5
Continuous force [N]:	3 - 9	Encoder resolution [ $\mu$ m]:	5 standard (1 and 0.1 optional)
Encoder repeatability:	+/- 4 encoder count	Moving mass [Kg]:	0.04 - 0.08
Total mass [Kg]:	0.27 -	Operating temperature [°C]:	0 - 65

## DIMENSIONS LCA25-010 SERIES



## Regional Distributor



5807 Van Allen Way, Carlsbad, CA 92008  
+1 760-929-7575      info@smac-mca.com

Specifications subject to change without notice.  
Rev. 2