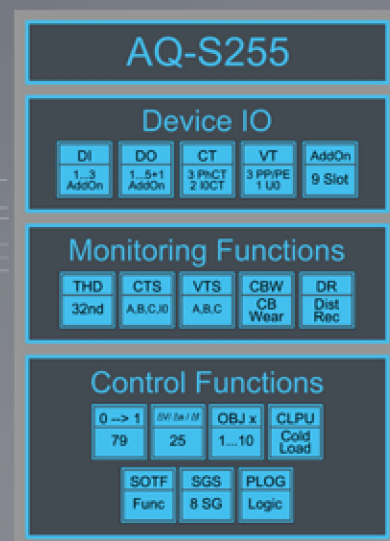
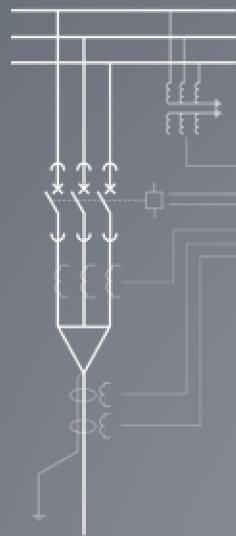


AQ-S255 Bay control IED

AQ-S255 bay control IED may be applied for demanding control applications. The AQ-S255 comes with full current, voltage, power and energy measurement capability and may be equipped with additional I/O depending on application needs. Easy to use and powerful logic programming expands further the application range to more demanding control needs. Up to 11 optional I/O or communication cards can be inserted depending on application requirements. Large freely programmable HMI display provides quick visualization of the object, alarm and event status. The AQ-S255 communicates using various protocols including IEC 61850 substation communication standard.



- Bay control unit with extensive IO
- Synchrocheck for up to three circuit breakers

MEASURING AND MONITORING

- Phase and residual currents (IL1, IL2, IL3, I01, I02)
- Voltage measurements (UL1-UL3, U12-U31, U0, SS)
- Current and voltage THD and harmonics (up to 31st)
- Frequency (f)
- Power (P, Q, S, pf)
- Energy (E+, E-, Eq+, Eq-)
- Disturbance recorder (3.2 kHz)
- Current transformer supervision (CTS)
- Fuse failure (VTS)
- Trip circuit supervision (TCS)

CONTROL

- Controllable objects: 10
- Synchro-check (25)
- Autorecloser (79)
- 8 setting groups

HARDWARE

- Current inputs: 5
- Voltage inputs: 4
- Digital inputs: 3 (standard)
- Output relays: 5+1 (standard)

OPTIONS (11 SLOTS)

- Digital inputs optional: +8/16/24/32/40/48/56/64/72/80/88

- Digital outputs optional: +5/10/15/20/25
- 2xmA in + 4xRTD in OR 8xRTD in
- 4xmA out+1xmA in
- Communication media (specified below)

EVENT RECORDING

- Non-volatile disturbance records: 100
- Non-volatile event records: 15000

COMMUNICATION MEDIA

- RJ 45 Ethernet 100Mb (front standard)
- RJ 45 Ethernet 100Mb and RS 485

(rear standard)

- Double LC Ethernet 100Mb (option)
- RS232 + serial fibre PP/PG/GP/GG (option)

COMMUNICATION PROTOCOLS STANDARD

- IEC 61850
- IEC 60870-5-103/101/104
- Modbus RTU, Modbus TCP/IP
- DNP 3.0, DNP 3.0 over TCP/IP
- SPA