

**Pro-face**  
for the best interface

Remote Monitoring Software for Mobile  
**Pro-face Remote HMI**

*mobility*



## Applications

### Save time with remote troubleshooting

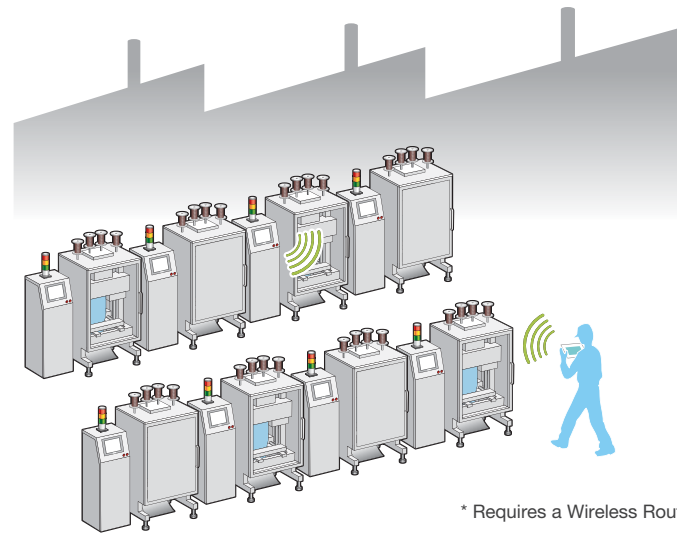
Confirm the cause of an error directly with your mobile device and see if the machine can be put back into operation without going on site.



\* Requires a Wireless Router.

### Efficient machine operation

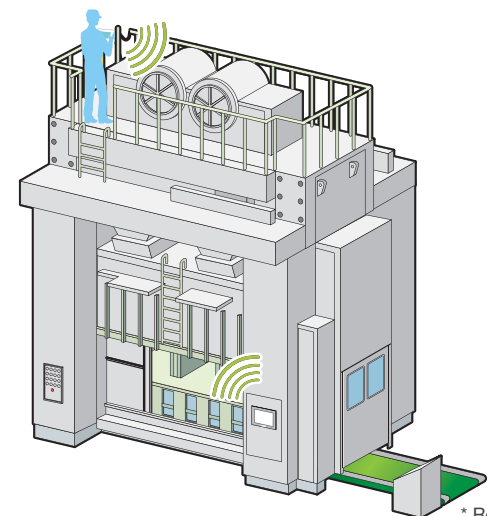
Check the status of a machine with a touch of the tablet or smartphone already in your hand. Operation of multiple machines distributed around your facility has never been easier. By verifying machine operation levels, the manufacturing efficiency is increased and downtime reduced.



\* Requires a Wireless Router.

### Run large size equipment more flexibly

By turning your mobile device into a portable HMI, large size equipment can be handled more easily and economically. Be at the spot of concern without the need of a secondary worker for operation.



\* Requires a Wireless Router.

\*Please check equipment status and maintain conditions for machine safety to avoid unintended equipment operation.

## Features

### Custom shortcuts

Once an HMI connection is registered in the Pro-face Remote HMI APP, custom images and names can be assigned to each registered HMI display. These shortcuts significantly improve ease of use thanks to clear identification and instant connection.



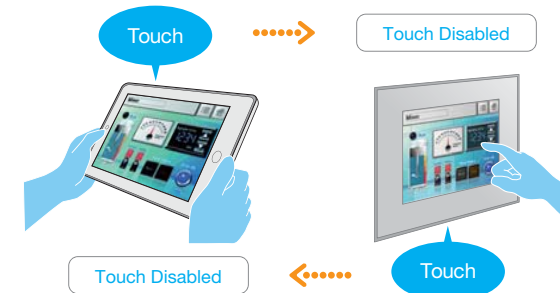
### Remote status indication

If the Pro-face Remote HMI client is connected to an HMI, an identification icon will be displayed on the HMI to inform the HMI operator about the connection. Setting of the touch operation monopoly is done via this icon.



### Exclusive Touch Operation

Setting the monopolize touch function prevents unexpected operational misuses caused by redundant operation. You can set a touch monopoly time, or set an arbitrary address for a control address to intentionally monopolize touch operation.



### Synchronous and Asynchronous Operation Mode

The Pro-face Remote HMI supports synchronous and asynchronous operation modes which can be selected during operation.

A new parameter in the GP-Pro EX setting provides the option to limit the operation modes for the Pro-face Remote HMI.

\*\* In the synchronous operation mode, the HMI and the Pro-face Remote HMI always display the same screen.

In the asynchronous operation mode both devices can show different screens and allow independent operation.



## Web Support

### Reliable 24/7 support through the internet.

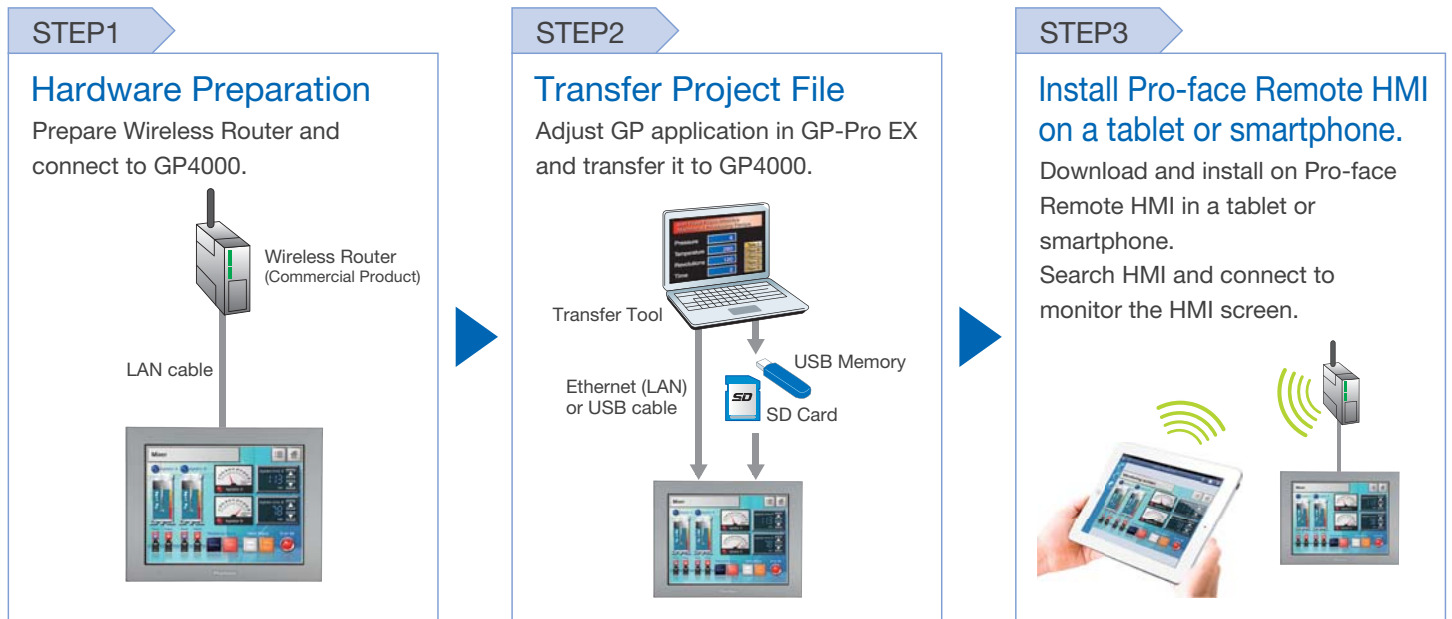
The contents of Pro-face Remote HMI support site offers services aimed at reducing development time for customers such as Q&A information.



For further information, visit our website.  
<http://www.pro-face.com/otasuke/qa/remotehmi/qa.html>



# Quick steps to use Pro-face Remote HMI



## How to get Pro-face Remote HMI

The Pro-face Remote HMI software can be purchased directly from App Store or Google Play via a mobile terminal anytime.



iOS: Ver. 5.1 or later / 6.0 or later / 7.0 or later

Android OS: Ver. 2.3x / 3.0x / 4.0x

Please search the "Pro-face Remote HMI" on the App Store or Google play.

## ⚠ WARNING

### HAZARD OF OPERATOR INJURY, OR UNINTENDED EQUIPMENT DAMAGE

Before operating any of these products, be sure to read all related manuals thoroughly.

Failure to follow these instruction can result in death or serious injury, unintended equipment damage.

- For printing purposes, the colors in this catalog may differ from those of the actual unit.
- Actual user screens may differ from the screens shown here.
- Electric equipment should be installed, operated, serviced, and maintained only by qualified personnel. No responsibility is assumed by Digital for any consequences arising out of the use of this material.
- All product names used in this catalog are the registered trademarks or trademarks of their respective companies.
- All information contained in this catalog is subject to change without notice.

<p><b>Global Headquarters</b> Digital Electronics Corporation Osaka, JAPAN Tel: +81 (0)6 6613 1101 Fax: +81 (0)6 6613 5888 www.pro-face.com info@pro-face.com</p>	<p><b>North America</b> Pro-face America, Inc. Ann Arbor, MI U.S.A Tel: +1 734 477 0600 Fax: +1 734 864 7347 www.profaceamerica.com info@profaceamerica.com</p>	<p><b>Taiwan</b> Pro-face Taiwan Co., Ltd. Taipei, TAIWAN Tel: +886 (0)2 2657 1121 Fax: +886 (0)2 2657 1021 www.proface.com.tw proface@proface.com.tw</p>	<p><b>European Headquarters</b> Pro-face Europe B.V. Hoofddorp, THE NETHERLANDS Tel: +31 (0)23 55 44 099 Fax: +31 (0)23 55 44 090 www.proface.eu info@proface.eu</p>	<p><b>Italy</b> Pro-face Italia S.p.a. Bovisio Masciago (Milano), ITALY Tel: +39 (0)362 59 96 1 Fax: +39 (0)362 59 96 69 www.proface.it info@proface.it</p>	<p><b>Spain and Portugal</b> Pro-face España Cardedeu (Barcelona), SPAIN Tel: +34 (0)93 846 07 45 Fax: +34 (0)93 845 48 68 www.proface.es info@proface.es</p>
<p><b>Australia and New Zealand</b> Pro-face Australia Mt. Waverley, AUSTRALIA Tel: +61 (0)3 9550 7396 Fax: +61 (0)3 9550 7390 www.pro-face.com.au www.pro-face.co.nz pfau@pro-face.com</p>	<p><b>Singapore</b> Pro-face Singapore TechPoint, Singapore Tel: +65-6832-5533 Fax: +65-6415-1605 www.proface.sg info@proface.sg</p>	<p><b>South-East Asia Pacific</b> Pro-face South-East Asia Pacific Co.,Ltd. Bangkok, THAILAND Tel: +66 (0)2 617 5678 Fax: +66 (0)2 617 5688 www.proface.co.th pfsales@proface.co.th</p>	<p><b>Austria</b> Pro-face Europe B.V.(Austria Office) Hagenberg, AUSTRIA Tel: +43 7236 3343 620 FAX: +43 7236 3343 629 www.proface.at info@proface.at</p>	<p><b>Denmark</b> Pro-face Northern Europe ApS Roskilde, DENMARK Tel: +45 70 22 01 22 Fax: +45 70 22 01 33 www.proface.dk info@proface.dk</p>	<p><b>Sweden</b> Pro-face Sweden AB Löddeköpinge (Malmö), SWEDEN Tel: +46 46 540 90 70 Fax: +46 46 71 27 90 www.proface.se info@proface.se</p>
<p><b>China</b> Pro-face China International Trading Co., Ltd. Shanghai, P. R. CHINA Tel: +86 (0)21 6361 5175 Fax: +86 (0)21 6361 5176 www.proface.com.cn proface@proface.com.cn</p>	<p><b>South Korea</b> Pro-face Korea Co., Ltd. Seoul, SOUTH KOREA Tel: +82 (0)2 2630 9850 Fax: +82 (0)2 2630 9860 www.proface.co.kr proface@proface.co.kr</p>	<p><b>France</b> Pro-face France S.A.S. Mity-Mory, FRANCE Tel: +33 (0)1 60 21 22 91 Fax: +33 (0)1 60 21 22 92 www.proface.fr info@proface.fr</p>	<p><b>Poland</b> Pro-face Europe B.V.(Warsaw Office) Warszawa, POLAND Tel: +48 (22) 465 66 62 Fax: +48 (22) 465 66 67 www.proface.pl info@proface.pl</p>	<p><b>Switzerland</b> Pro-face Schweiz GmbH Regensdorf, SWITZERLAND Tel: +41 (0)43 343 7272 Fax: +41 (0)43 343 7279 www.proface.ch info@proface.ch</p>	<p><b>Germany</b> Pro-face Deutschland GmbH Solingen, GERMANY Tel: +49 (0)212 258 2640 Fax: +49 (0)212 258 2640 www.proface.de info@pro-face.de</p>
<p><b>India</b> Pro-face India Bangalore, INDIA Tel: +91 80 4333 3540/3541 Fax: +91 80 4333 3222 www.proface.co.in sales.proface@proface.co.in</p>	<p><b>Russia</b> Pro-face Europe B.V. (Russia Office) Saint-Petersburg, RUSSIA Tel: +7 (812) 336 47 06 Fax: +7 (812) 336 47 18 www.pro-face.ru info@pro-face.ru</p>	<p><b>United Kingdom</b> Pro-face UK Ltd Coventry, ENGLAND Tel: +44 (0)2476 511288 Fax: +44 (0)2476 511499 www.proface.co.uk info@proface.co.uk</p>			