

Product Guide

2014

Corporate and Product Information



for the best interface

Touch HMI

Touch PLC

Industrial PC / Flat Panel Display

Software

Pro-face
for the best interface

Contents

Touch HMI

Page 03 Page 04

GP4000 SERIES

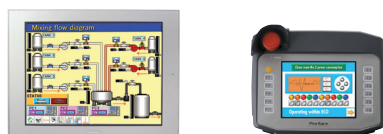
Touch HMI Multi-Driver
Standard, Basic Model
Modular, Compact Type



Page 05 Page 06

AGP3000 SERIES

Touch HMI Multi-Driver and Multi-Media
Handy Touch HMI Multi-Driver



Touch PLC

Page 07

AGP3000 SERIES

Touch PLC
FieldBus I/Os



Page 08

LT4000M SERIES

Touch PLC
Compact with I/O Built-In



Page 08

LT3000 SERIES

Touch PLC
Compact with I/O
Built-In and Expansion Unit



Industrial PC / Flat Panel Display

Page 09

PS4000 SERIES

Industrial PC
Modular & Compact



Page 10

FP3000 SERIES

Industrial Flat Panel Display



Software

Page 13

Pro-face Remote HMI

Remote Monitoring Software for mobile

Page 11

GP-Pro EX

"All-in-one" HMI Software

Page 13

Pro-Server EX

Data Management Software

Page 13

Camera-Viewer EX

Camera Remote Monitoring Software

Page 13

GP-Viewer EX

Screen Remote Monitoring Software

Page 13

RPA

Remote PC Access

Page 10

WinGP

HMI Runtime Engine for PC

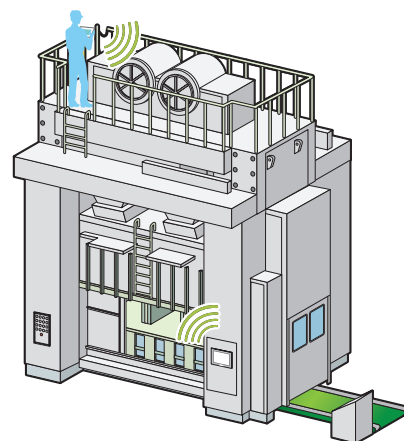
Pro-face 2014 New face

Pro-face Remote HMI

Monitoring Anywhere of Large/Long Equipment

Using the remote monitoring and operation functions, actions that previously required multiple staff for a large-sized machine or long-distance application can be easily accomplished by fewer operators.

*Please check equipment status and maintain conditions for machine safety to avoid unintended equipment operation.



Troubleshooting before running to troubled machine

You can confirm possible causes of errors to prepare for necessary actions and tools before running down to the point of the problem.



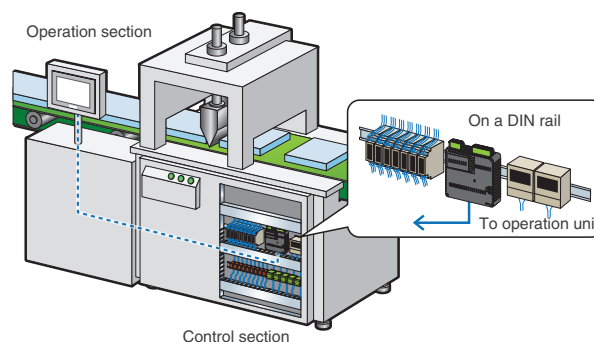
LT4000M Series

Flexible installation choices for separated or integrated configurations

Use a separation cable* to install the control unit on a DIN rail and the operation unit in a different location.

Operation unit is space-saving, and it allows you to install the unit flexibly even though it is difficult to install it due to limitations of space.

*Requires separate an option cable.



Compact size provides comprehensive interface options and a crisp display

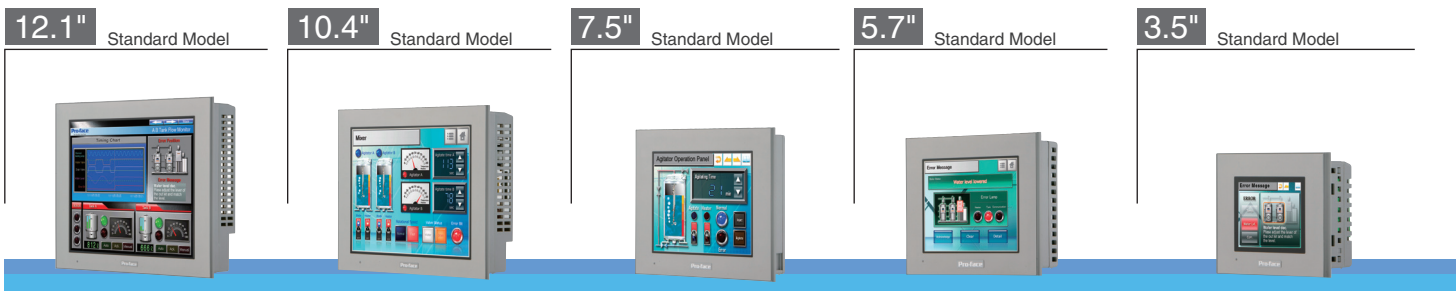
High-quality 65,536-color TFT display and realistic 3D graphics let you create easy-to-read detailed operation screens.

Control unit provides DIO/AIO input/output as well as USB for connecting peripheral devices, serial port for PLCs or other controllers, and Ethernet for network connection.



Touch HMI Multi-Driver

The new GP4000 Series brings high performance with a wide variety of size from 12.1" to 3.4"



GP-460xT

- 65,536-color TFT
- 800 × 600 pixels (SVGA)
- Analog or Matrix Touch Panel
- Application 32MB
- Data Backup 320KB
- Alarm Analysis Database
- Built-in Control Program
- Replaceable Battery
- W315 x H241 x D56 mm
[W12.4 x H9.49 x D2.2 in.]

Ethernet
COM 2 ch
SD Card
USB (Host) USB (Device)
AC DC

Coated models are available
COM-isolated models are available

GP-450xT

- 65,536-color TFT
- 640 × 480 pixels (VGA)
- Analog or Matrix Touch Panel
- Application 32MB
- Data Backup 320KB
- Alarm Analysis Database
- Built-in Control Program
- Replaceable Battery
- W272.5 x H214.5 x D57 mm
[W10.73 x H8.44 x D2.24 in.]

Ethernet
COM 2 ch
SD Card
USB (Host) USB (Device)
AC DC

Coated models are available
COM-isolated models are available

GP-4401T

- 65,536-color TFT
- 640 × 480 pixels (VGA)
- Analog Touch Panel
- Application 32MB
- Data Backup 320KB
- Alarm Analysis Database
- Built-in Control Program
- Replaceable Battery
- W218 x H173 x D60 mm
[W8.58 x H6.81 x D2.36 in.]

Ethernet
COM 2 ch
SD Card
USB (Host) USB (Device)
AC DC

Coated models are available
COM-isolated models are available

GP-430xT

- 65,536-color TFT
- 320 × 240 pixels (QVGA)
- Analog Touch Panel
- Application 16MB
- Data Backup 320KB
- Alarm Analysis Database
- Built-in Control Program
- Replaceable Battery
- W169.5 x H137 x D59.5 mm
[W6.67 x H5.39 x D2.34 in.]

Ethernet
COM 2 ch
SD Card
USB (Host) USB (Device)
AC DC

Coated models are available
COM-isolated models are available

GP-420xT

- 65,536-color TFT
- 320 × 240 pixels (QVGA)
- Analog Touch Panel
- Application 16MB
- Data Backup 320KB
- Alarm Analysis Database
- Built-in Control Program
- W132 x H106 x D42 mm
[W5.2 x H4.17 x D1.65 in.]

Ethernet
COM 1 ch
SD Card
USB (Host) USB (Device)
AC DC

COM-isolated models are available

5.7" Modular Type



GP-4301TM

- 65,536-color TFT
- 320 × 240 pixels (QVGA)
- Analog Touch Panel
- Application 8MB
- Data Backup 128KB
- W163 x H129.4 x D56.5 mm
[W6.41 x H5.09 x D2.224 in.]

Ethernet
COM 1 ch
SD Card
USB (Host) USB (Device)
AC DC

3.5" Modular Type



GP-4201TM

- 65,536-color TFT
- 320 × 240 pixels (QVGA)
- Analog Touch Panel
- Application 8MB
- Data Backup 128KB
- W97.6 x H80 x D56.3 mm
[W3.84 x H3.1 x D2.21 in.]

Ethernet
COM 1 ch
SD Card
USB (Host) USB (Device)
AC DC

3.4" Compact Type



GP-4100

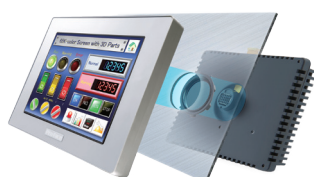
- 16-shades Mono
- 3-color Switchable Backlight
- 200 × 80 pixels
- Analog Touch Panel
- Application 2.2MB
- Data Backup 128KB
- W116 x H77.5 x D28 mm
[W4.59 x H3.05 x D1.1 in.]

Ethernet *1
COM 1 ch *2
SD Card
USB (Host) USB (Device)
AC DC

COM-isolated models are available

*1: GP-4104 only
*2: Excluding GP-4104

Modular Type
for Easy
Mounting
(GP-4000M)





10.4" Basic Model



GP-4501TW

- 65,536-color TFT
- 640 × 480 pixels (VGA)
- Analog Touch Panel
- Application 16MB
- Data Backup 128KB
- Built-in Control Program
- W315 x H241 x D56 mm
[W12.4 x H9.49 x D2.2 in.]

Ethernet
COM 2 ch
SD Card
USB (Host) USB (Device)
AC DC

7.0" wide Basic Model



GP-4401WW

- 65,536-color TFT
- 800 × 480 pixels (WVGA)
- Analog Touch Panel
- Application 16MB
- Data Backup 128KB
- Built-in Control Program
- W218 x H173 x D60 mm
[W8.58 x H6.81 x D2.36 in.]

Ethernet
COM 2 ch
SD Card
USB (Host) USB (Device)
AC DC

5.7" Basic Model



GP-4301TW

- 65,536-color TFT
- 320 × 240 pixels (QVGA)
- Analog Touch Panel
- Application 8MB
- Data Backup 128KB
- Built-in Control Program
- W169.5 x H137 x D59.5 mm
[W6.67 x H5.39 x D2.34 in.]

Ethernet
COM 2 ch
SD Card
USB (Host) USB (Device)
AC DC

Coated models are available

3.5" Basic Model

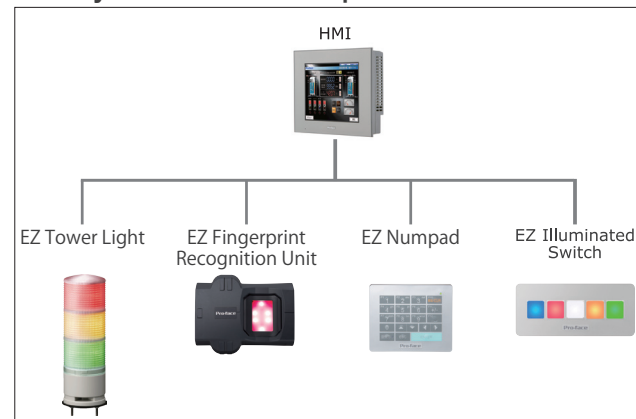


GP-4201TW

- 65,536-color TFT
- 320 × 240 pixels (QVGA)
- Analog Touch Panel
- Application 8MB
- Data Backup 128KB
- Built-in Control Program
- W132 x H106 x D42 mm
[W5.2 x H4.17 x D1.65 in.]

Ethernet
COM 2 ch
SD Card
USB (Host) USB (Device)
AC DC

Easily connect multiple USB devices



Mobile Remote Monitoring of HMI (Pro-face Remote HMI)



International Safety Standards*
*For details, visit our website.



The Perfect Visualization Solution for every need.

Rear-mounting HMI, Integrates into Machine Design

GP4000 Series
Rear-mount Model



Size	12.1"	10.4"	7.5"	5.7"
------	-------	-------	------	------

GP4000 Series Rear-mount Models are DC power and analog touch panel models only.

Corrosion-resistant Board Coating for Environmental Requirement

All GP4000 Series products are available in coated models.
(Except GP4100 Series and GP4000M Series)

Compatibility with Equipment Design or Customer Corporate Brand

GP4000 Series Color Variation



Silver
PANTONE
8401C



Off-white
PANTONE
Cool Gray 1C



Beige
PANTONE
7535C



Black
PANTONE
432C

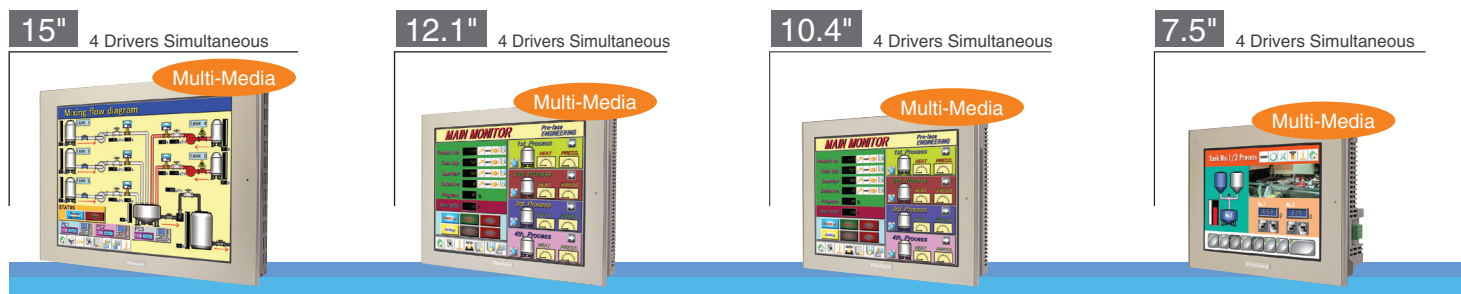
For further informations, visit our website.

www.proface.eu/product/hmi/gp4000.html



Touch HMI Multi-Driver and Multi-Media

The AGP3000 Series is available in a wide variety of sizes from 15" to 5.7".



AGP-3750T

- 65,536-color TFT
- 1,024 x 768 pixels (XGA)
- Analog Touch Panel
- Application 16MB*
- *10MB when the Event Recorder Function is in use.
- Data Backup 320KB
- Built-in Control Program
- W395 x H294 x D60 mm
- [W15.55 x H11.57 x D2.36 in.]

Ethernet
COM 2 ch
Expansion Unit I/F
Video Mix Unit I/F
USB (Host) CF Card
Video In Sound In
AC DC

Coated models are available

AGP-3650U/T

- 65,536-color TFT
- AGP-3650U is ultra high-brightness model
- 800 x 600 pixels (SVGA)
- Analog Touch Panel
- Application 10MB
- Data Backup 320KB
- Built-in Control Program
- W313 x H239 x D56 mm
- [W12.32 x H9.41 x D2.20 in.]

Ethernet
COM 2 ch
Expansion Unit I/F
Video Mix Unit I/F
USB (Host) CF Card
Video In Sound In
AC DC

Coated models are available

AGP-3560T

- 65,536-color TFT
- 800 x 600 pixels (SVGA)
- Analog Touch Panel
- Application 10MB
- Data Backup 320KB
- Built-in Control Program
- W270.5 x H212.5 x D57 mm
- [W10.65 x H8.37 x D2.24 in.]

Ethernet
COM 2 ch
Expansion Unit I/F
Video Mix Unit I/F
USB (Host) CF Card
Video In Sound In
AC DC

Coated models are available

AGP-3450T

- 65,536-color TFT
- 640 x 480 pixels (VGA)
- Analog Touch Panel
- Application 10MB
- Data Backup 320KB
- Built-in Control Program
- W215 x H170 x D60mm
- [W8.46 x H6.69 x D2.36 in.]

Ethernet
COM 2 ch
Expansion Unit I/F
Video Mix Unit I/F
USB (Host) CF Card
Video In Sound In
AC DC

Coated models are available

Multi-Media model

The Event Recorder allows you to analyze the cause with recorded images

Video recording can capture a situation in image form.

This feature is effective for predictive maintenance as well as preservation and analysis of error logs.



Video functions make operation instructions easy to understand

You can play back a video file right on the GP3000. Operation instructions in video can display details clearly.



All operators can easily follow maintenance and operation manuals on video.



Work tips and skills training can be made on-screen.

Video instructions reduce the workload of on-site support [Video Playback]

By providing operation and maintenance instructions on video, you can create an environment that enables any site operators to perform maintenance from clear instructions.



International Safety Standards*
*For details, visit our website.

AC Models



DC Models



Handy Touch HMI Multi-Driver

5.7" 2 Drivers Simultaneous



5.7" 2 Drivers Simultaneous



AGP-3360T

- 65,536-color TFT
- 640 × 480 pixels (VGA)
- Analog Touch Panel
- Application 8MB
- Data Backup 320KB
- Built-in Control Program
- W167.5 × H135 × D59.5 mm
[W6.59 × H5.31 × D2.34 in.]

Ethernet
COM 2 ch
Expansion Unit I/F
Video Mix Unit I/F
USB (Host) CF Card
Video In Sound In
AC DC

AGP-3300U

- 65,536-color TFT
- Ultra high-brightness model
- 320 × 240 pixels (QVGA)
- Analog Touch Panel
- Application 6MB
- Data Backup 320KB
- Built-in Control Program
- W167.5 × H135 × D59.5mm
[W6.59 × H5.31 × D2.34 in.]

Ethernet
COM 2 ch
Expansion Unit I/F
Video Mix Unit I/F
USB (Host) CF Card
Video In Sound In
AC DC

AGP-3310HT

- 65,536-color TFT
- 640 × 480 pixels (VGA)
- Analog Touch Panel
- Application 8MB
- Data Backup 320KB
- W224 × H174 × D87.1 mm
[W8.82 × H6.85 × D3.43 in.]

Ethernet
COM 1 ch
Expansion Unit I/F
Video Mix Unit I/F
USB (Host) CF Card
Video In Sound In
AC DC

AGP-3300HL

- 16-shades Mono
- 320 × 240 pixels (QVGA)
- Analog Touch Panel
- Application 6MB
- Data Backup 320KB
- W224 × H174 × D87.1 mm
[W8.82 × H6.85 × D3.43 in.]

Ethernet
COM 1 ch
Expansion Unit I/F
Video Mix Unit I/F
USB (Host) CF Card
Video In Sound In
AC DC

Ultra high-brightness model

High brightness models minimizing reflection to the features from a larger sized model provide high visibility even in well-lit locations



Handheld model

Emergency Switch

Handheld units are available with or without an emergency switch. Switches are available in red, yellow or grey.



3-Position Enable Switch

If a hazardous event occurs, such as an electric shock, releasing or fully pressing the emergency switch will stop machine operation.



The key switch allows you to move the device without triggering the emergency stop.

For further informations, visit our website.

www.proface.eu/product/hmi/gp3000.html



Touch PLC FieldBus I/Os

AGP3000 Series: HMI+PLC

12.1" 4 Drivers Simultaneous



AGP-3600T

- 65,536-color TFT
- 800 × 600 pixels (SVGA)
- Analog Touch Panel
- Application 16MB
- Data Backup 320KB
- Built-in Control Program
- W313 x H239 x D56 mm
[W12.32 x H9.41 x D2.20 in.]

DIO	CANopen
Ethernet	
COM 2 ch	
Expansion Unit I/F	
Video Mix Unit I/F	
USB (Host)	CF Card
AC	DC

AGP-3600U

- 65,536-color TFT
- Ultra high-brightness Model
- 800 × 600 pixels (SVGA)
- Analog Touch Panel
- Application 16MB
- Data Backup 320KB
- Built-in Control Program
- W313 x H239 x D56 mm
[W12.32 x H9.41 x D2.20 in.]

DIO	CANopen
Ethernet	
COM 2 ch	
Expansion Unit I/F	
Video Mix Unit I/F	
USB (Host)	CF Card
AC	DC

10.4" 4 Drivers Simultaneous



AGP-3500T

- 65,536-color TFT
- 640 × 480 pixels (VGA)
- Analog Touch Panel
- Application 16MB
- Data Backup 320KB
- Built-in Control Program
- W270.5 x H212.5 x D57 mm
[W10.65 x H8.37 x D2.24 in.]

DIO	CANopen
Ethernet	
COM 2 ch	
Expansion Unit I/F	
Video Mix Unit I/F	
USB (Host)	CF Card
AC	DC

7.5" 4 Drivers Simultaneous



AGP-3400T

- 65,536-color TFT
- 640 × 480 pixels (VGA)
- Analog Touch Panel
- Application 16MB
- Data Backup 320KB
- Built-in Control Program
- W215 x H170 x D60 mm
[W8.46 x H6.69 x D2.36 in.]

DIO	CANopen
Ethernet	
COM 2 ch	
Expansion Unit I/F	
Video Mix Unit I/F	
USB (Host)	CF Card
AC	DC

5.7" 2 Drivers Simultaneous



AGP-3300T

- 65,536-color TFT
- 320 × 240 pixels (QVGA)
- Analog Touch Panel
- Application 6MB
- Data Backup 320KB
- Built-in Control Program
- W167.5 x H135 x D59.5 mm
[W6.59 x H5.31 x D2.34 in.]

DIO	CANopen
Ethernet	
COM 2 ch	
Expansion Unit I/F	
Video Mix Unit I/F	
USB (Host)	CF Card
AC	DC

CANopen I/O Expansion Unit



	EX Expansion Module		CANopen Remote I/O
Master	—		CANopen Master
Input	8-point Input	16-point Input	—
Output	8-point Relay Output, 8-point Sink Output, 8-point Source Output	16-point Relay Output, 16-point Sink Output, 16-point Source Output	—
Input/ Output	4-point Input/ 4-point Output, 16-point Input/ 8-point Relay Output		CANopen Slave HTB (12-point Input/ 2-point Source Output/ 6-point Relay Output)
Analog	2-ch Analog Input, 2-ch Analog Input/ 1-ch Analog Output, 4-ch Analog Input/ 2-ch Analog Output	1-ch Analog Output, 2-ch Analog Output	—
Temperature	2-ch Thermocouple Pt100 Input/ 1-ch Analog Output, 4-ch Voltage, Current, Pt100/ Pt1000/ Ni100/ Ni1000 Input, 8-ch Temperature Pt100/ Pt1000 Input		—

International Safety Standards*
*For details, visit our website.

AC Models



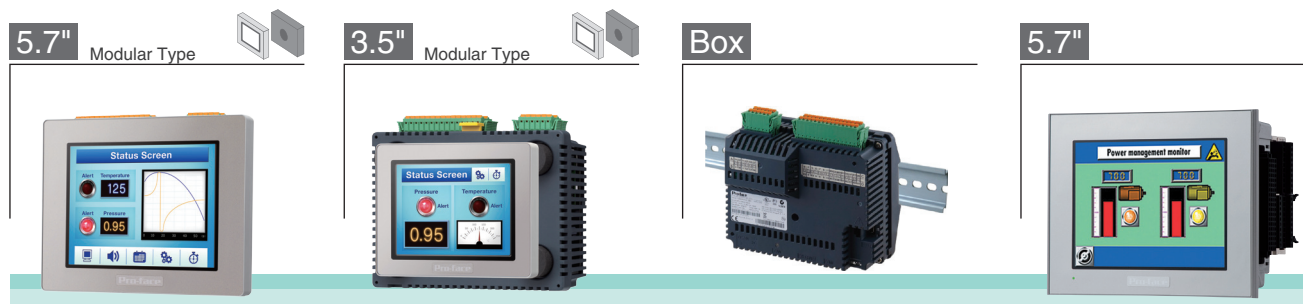
DC Models



Touch PLC

Compact with I/O Built-In
Compact with I/O Built-In and Expansion Unit

LT4000M Series, LT3000 Series: HMI+PLC



LT-4301TM

- 65,536-color TFT
- 320 x 240 pixels (QVGA)
- Analog Touch Panel
- Application 16MB
- Data Backup 256KB
- Built-in Control Program
- Alarm Analysis Database
- W163 x H129.4 x D76.22 mm
[W6.4 x H5.09 x D3.0 in.]

DIO	CANopen	AIO
Ethernet		
COM 1 ch		
USB (Host)	USB (Device)	
DIO:Max.20-in/Max.12-out.		
AIO:Max.4-in/Max.2-out.		
AC	DC	

*Analog model only

LT-4201TM

- 65,536-color TFT
- 320 x 240 pixels (QVGA)
- Analog Touch Panel
- Application 16MB
- Data Backup 256KB
- Built-in Control Program
- Alarm Analysis Database
- W97.6 x H80 x D74.95 mm
[W3.8 x H3.1 x D2.95 in.]

DIO	CANopen	AIO
Ethernet		
COM 1 ch		
USB (Host)	USB (Device)	
DIO:Max.20-in/Max.12-out.		
AIO:Max.4-in/Max.2-out.		
AC	DC	

*Analog model only

LT-4000M

- Application 16MB
- Data Backup 256KB
- Built-in Control Program
- Alarm Analysis Database
- W128 x H108 x D60.2 mm
[W5 x H4 x D2.36 in.]

DIO	CANopen	AIO
Ethernet		
COM 1 ch		
USB (Host)	USB (Device)	
DIO:Max.20-in/Max.12-out.		
AIO:Max.4-in/Max.2-out.		
AC	DC	

*Analog model only

LT-330xT

- 65,536-color TFT
- 320 x 240 pixels (QVGA)
- Analog Touch Panel
- Application 6MB
- Data Backup 128KB
- Built-in Control Program
- W167.5 x H135.0 x D78.0 mm
[W6.59 x H5.31 x D3.07 in.]

DIO	CANopen
Ethernet	
COM 1 ch	
USB (Host)	
16-point in. 16-point out.	
Max. 3 EX Modules	
AC	DC

* Requires an optional Master Unit.

3 Ways To Use LT4000M

- Display + Box
- Display + Cable/Adapter (DIN rail) + Box
- Box only + Adapter (DIN rail)








For further informations, visit our website.

www.proface.eu/product.html



Industrial PCs and Industrial Flat Panel Display

Industrial PCs (Built-to-order for your requirements)

	PS-4800		PS-4700		PS-4700 (Embedded model)	PS-4600	PS-4000B
							
	Aluminum Bezel		Aluminum Bezel Stainless Steel Bezel		Aluminum Bezel Stainless Steel Bezel	Aluminum Bezel No bezel (Rear-mount)	
Display	19" SXGA (1,280 × 1,024)		15" XGA (1,024 × 768)		15" XGA (1,024 × 768)	12" XGA (1,024 × 768)	—
Expansion Slot	2 slots* ¹ 1 slot* ² 0 slot		0 slot		0 slot	2 slots* ³ 1 slot* ⁴ 0 slot	5 slots* ⁵ 2 slots* ¹ 1 slot* ²
CPU	Core™ 2 Duo P8400 2.26GHz Atom™ N270 1.6GHz		Atom™ Z510 1.1GHz		Atom™ Z510 1.1GHz	Core™ i3-3217UE 1.60GHz Celeron™ 827E 1.40GHz	Core™ 2 Duo P8400 2.26GHz Atom™ N270 1.6GHz
Power Supply	AC 100-240V DC 24V* ⁶		DC 24V* ⁶		DC 24V* ⁶	AC 100-240V DC 24V	DC 24V* ⁶
RAM	2 to 8GB* ⁷ (Core™ 2 Duo P8400) 1 to 3GB (Atom™ N270)		1 to 2GB		1 to 2GB	1 to 16GB* ⁷	2 to 8GB* ⁷ (Core™ 2 Duo P8400) 1 to 3GB (Atom™ N270)
Windows® OS	Embedded Standard 2009 (32bit), Embedded Standard 7 Premium (32bit), XP Professional (32bit) or 7 Ultimate (32/64bit)		Embedded Standard 2009 (32bit)		Embedded Standard 2009 (32bit)	Embedded Standard 2009 (32bit), Embedded Standard 7 Premium (32bit), XP Professional (32bit) or 7 Ultimate (32/64bit)	Embedded Standard 2009 (32bit), Embedded Standard 7 Premium (32bit), XP Professional (32bit) or 7 Ultimate (32/64bit)
Storage	CF: 4GB or 8GB* ⁸ HDD: 500GB SSD: 60GB		CF: 4GB* ⁸		CF: 4GB* ⁸	CFast: 4GB or 8GB* ⁸ HDD: 500GB SSD: 60GB or 128GB* ⁹	CF: 4GB or 8GB* ⁸ HDD: 500GB SSD: 60GB
Interface	COM	2	2	2	1	2	2
	LAN	2	2	2	1	2	2
	CF	1	1	1	1	—	1
	CFast	—	—	—	—	1	—
	DVI-I	1	1	1	—	1	1
	USB	5	5 (4)* ¹⁰	3 (2)* ¹⁰	3 (2)* ¹⁰	5 (4)* ¹⁰	5
Expansion Option	Slide-in Slot	DVD Multi drive	★	—	—	DVD Multi drive	★
		HDD	★	—	—	HDD	★
		SSD	★	—	—	SSD	★
Expansion Option	I/F Port	RS-232C/422/485 UPS		Ethernet		RS-232C/422/485 UPS	

★: Expandable by adding option.

*1: "PCI x1 and PCIe (x4) x1" or "PCI x2" *2: "PCI x1" *3: "PCI x1 and PCIe(x8) x1" or "PCI x2" *4: "PCI x1" or "PCIe(x8) x1" *5: 5 slots is available when choosing Core™ 2 Duo P8400 only.

*6: Special power supply is available for conformance to marine vessel standards or for the use of UPS. *7: More than 6GB memory is available when choosing 64-bit OS.

*8: CF Card and CFast are Embedded OS only. *9: The SSD 128GB is under development. *10: Stainless Steel Bezel Models and Rear-mount Models have no front USB interface.



The BTO allows you to select your desired PC and customize it in detail.*





* Please note that some patterns cannot be selected depending on the model or combination. Confirm your selection with the BTO sheet on the Pro-face web site.

For detailed specifications, visit our website.

<http://www.pro-face.com/product/ipc/ps4000/>



Industrial Flat Panel Display

19"	15"	12.1"	10.4"																																
																																			
FP-3900T	FP-3710T	FP-3650T/3600T	FP-3500T																																
<ul style="list-style-type: none"> 1,280 x 1,024 pixels (SXGA) Front USB Interface (FP3900-T41-U) Rear USB Interface DVI-D, Analog RGB input W460 x H390 x D77.7 mm [W18.11 x H15.35 x D3.06 in.] 	<ul style="list-style-type: none"> 1,024 x 768 pixels (XGA) Front USB Interface (FP3710-T42-U) Rear USB Interface DVI-D, Analog RGB input W395 x H294 x D60 mm [W15.55 x H11.57 x D2.36 in.] 	<ul style="list-style-type: none"> 1,024 x 768 pixels (XGA), 800 x 600 pixels (SVGA) Rear USB Interface DVI-D, Analog RGB input W317 x H243 x D58 mm [W12.48 x H9.57 x D2.28 in.] 	<ul style="list-style-type: none"> 640 x 480 pixels (VGA) Rear USB Interface DVI-D, Analog RGB input W317 x H243 x D58 mm [W12.48 x H9.57 x D2.28 in.] 																																
<table border="1"> <tr><td colspan="2">COM</td></tr> <tr><td>Analog RGB</td><td>DVI-D</td></tr> <tr><td>USB (Host)*</td><td>USB (Device)</td></tr> <tr><td>AC</td><td>DC</td></tr> </table> <p>*FP3900-T41-U only</p>	COM		Analog RGB	DVI-D	USB (Host)*	USB (Device)	AC	DC	<table border="1"> <tr><td colspan="2">COM</td></tr> <tr><td>Analog RGB</td><td>DVI-D</td></tr> <tr><td>USB (Host)*</td><td>USB (Device)</td></tr> <tr><td>AC</td><td>DC**</td></tr> </table> <p>*FP3710-T42-U only **FP-3710T only</p>	COM		Analog RGB	DVI-D	USB (Host)*	USB (Device)	AC	DC**	<table border="1"> <tr><td colspan="2">COM</td></tr> <tr><td>Analog RGB</td><td>DVI-D</td></tr> <tr><td>USB (Host)</td><td>USB (Device)</td></tr> <tr><td>AC</td><td>DC*</td></tr> </table> <p>Coated models are available *FP-3600T only</p>	COM		Analog RGB	DVI-D	USB (Host)	USB (Device)	AC	DC*	<table border="1"> <tr><td colspan="2">COM</td></tr> <tr><td>Analog RGB</td><td>DVI-D</td></tr> <tr><td>USB (Host)</td><td>USB (Device)</td></tr> <tr><td>AC</td><td>DC</td></tr> </table>	COM		Analog RGB	DVI-D	USB (Host)	USB (Device)	AC	DC
COM																																			
Analog RGB	DVI-D																																		
USB (Host)*	USB (Device)																																		
AC	DC																																		
COM																																			
Analog RGB	DVI-D																																		
USB (Host)*	USB (Device)																																		
AC	DC**																																		
COM																																			
Analog RGB	DVI-D																																		
USB (Host)	USB (Device)																																		
AC	DC*																																		
COM																																			
Analog RGB	DVI-D																																		
USB (Host)	USB (Device)																																		
AC	DC																																		

Regarding the acquisition of the international safety standards, visit Pro-face website.

WinGP - HMI screen data operable on a Windows PC

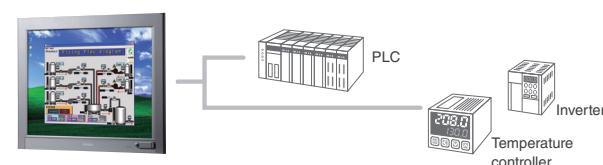
The IPC runtime engine, WinGP, can run screen data created for Pro-face HMI on GP-Pro EX software on a Windows PC. *1

*1: WinGP can be installed from GP-Pro EX DVD-ROM, only the license needs to be purchased.



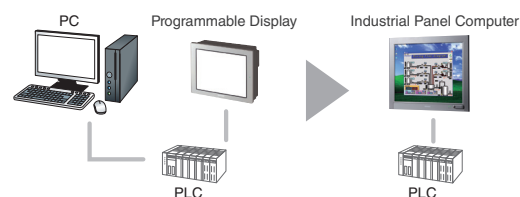
Communication with Various Controllers

The system configuration which used to be built with PC, HMI and PLC can be built only with IPC and PLC.



Downsize System Space

Communication drivers are included as standard so there is no need to develop drivers for communication with PLCs, temperature controllers, and other control devices.



Combination with User Applications

Dedicated API allows for flexible integration with in-house PC applications.

For further informations, visit our website.

www.proface.eu/product/ipc/series_index.html



Software

GP-Pro EX, HMI Screen Editor & Logic Programming Software

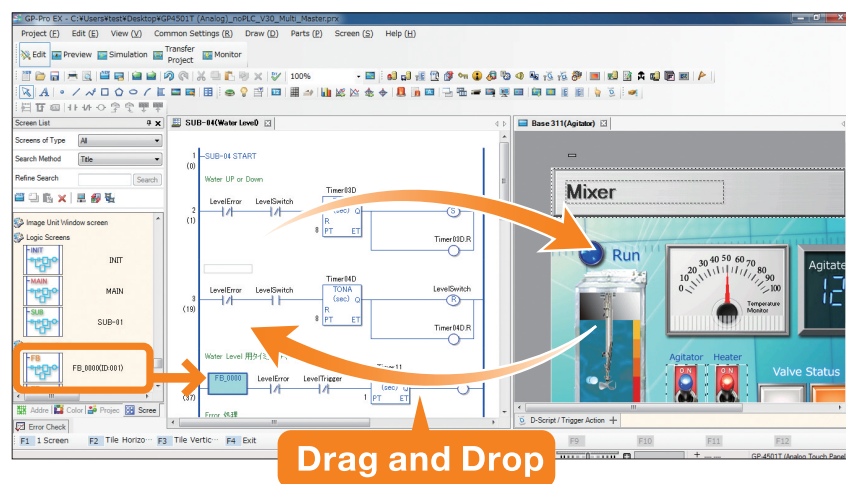
Easy sharing of symbolized device data between HMI screen and control programs using drag and drop operation provides you with intuitive operation throughout the successful completion of a project.

Function Block control programming also eases your control system design with frequently used and specially defined control functions.

GP-Pro EX

GP-Pro EX Ver.3.6 now available!!

- Remote HMI: new functions and LT4000M support
- LT4000M: display-less operation
- EZ Numpad support
- Windows 8 support
- Others



GP-Pro EX Features

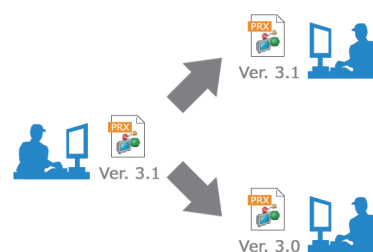
Quickly understand detailed differences between similar project files

Project Comparison Tool allows easy yet detailed comparison of two screen-project files for updating and modifying customer applications. Differences for each part attribute, alarm message, or setup item are displayed.

Screen B1		A	B
Parts 1	Address	X0001	X0002
	Shape	Circle	Square
	Action	Momentary	Alternate
	Label	Run	Run
	...		

Multi-version File Format Support for Screen Project Files

Screen project files edited in version 3.1 of GP-Pro EX can also be saved in version 3.0 format to facilitate screen data handling among personnel with different responsibilities such as testing engineers, factory installation technicians, and maintenance engineers.

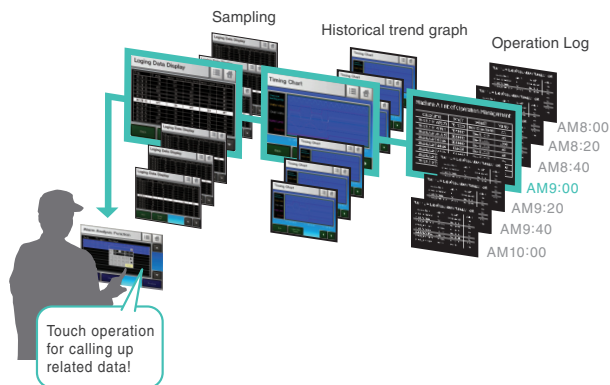


More New Features

- Change password during on-line operation
- Extended text search and replacement
- Range Setting on Word Switch
- Selectable SRAM Back-up Data Modes for Screen Data Transfer

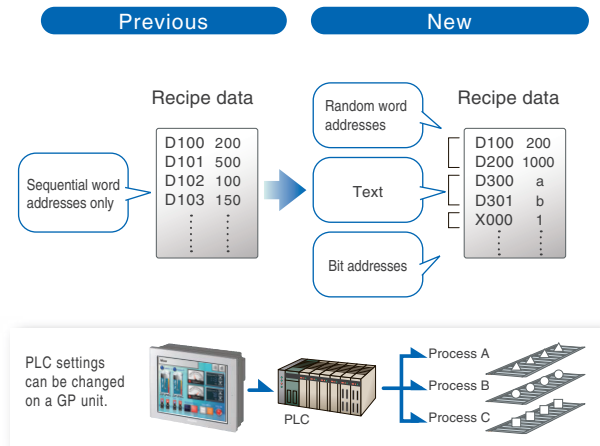
Alarm Analysis

When an error occurs, an operator can easily identify the conditions on-site by touching the alarm message. This calls up the error-related data in chronological order.



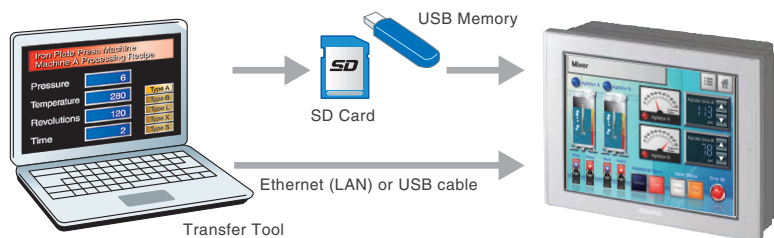
Enhanced Recipes

Develop recipes for specific devices that even combine diverse elements such as bit data, word data, and strings.



Easily Transfer

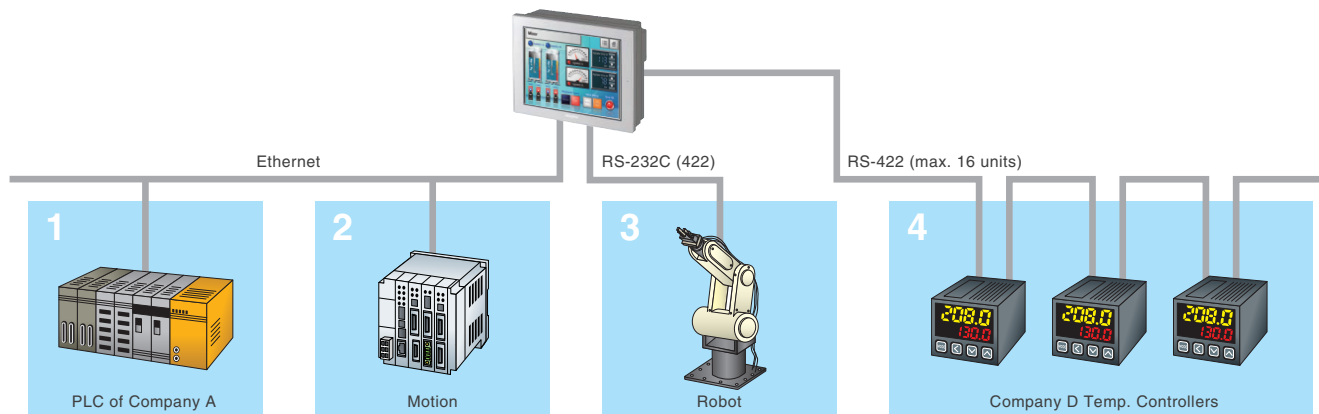
Screen data can be updated by using the data transfer tool, even without a software license.



The data transfer tool can be downloaded for free from the Web
www.pro-face.com/otasuke/download/

A Wide Range of Device Connections

Using the Serial Interface and Ethernet Interface, you can manage all information from a single GP through simultaneous communication with up to four types of devices.



For further informations, visit our website.
www.proface.eu/product/soft/gpproex.html

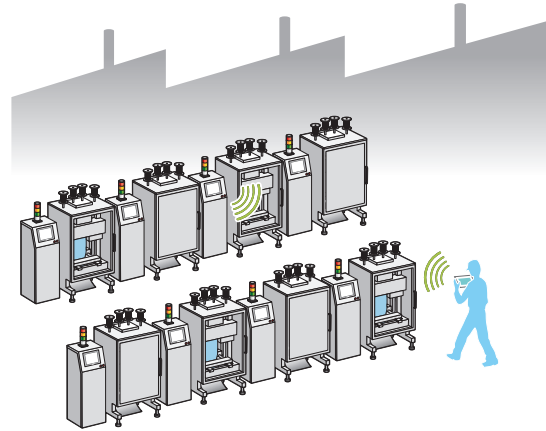


Remote Monitoring of On-site Situations in Real-time

Pro-face Remote HMI

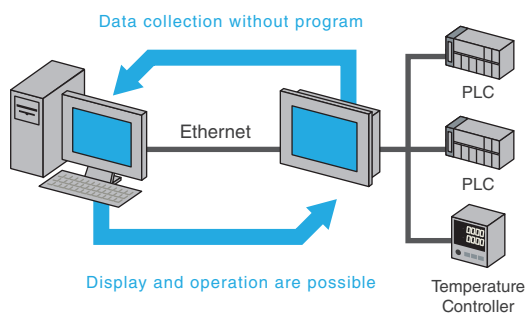
Efficiently and effectively monitor machines on the factory floor

Check the status of a machine with a touch of the tablet or smartphone already in your hand.
In a production site with multiple machines, you can reduce regular maintenance, and confirm remaining material supply or other machine information without moving between machines.



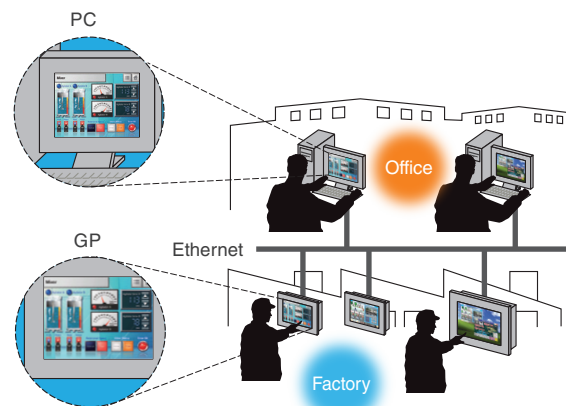
Data Management **Pro-Server EX**

Using GP-Pro EX as your platform, you can easily design screens at low cost that gather information on the display and connected equipment. *1



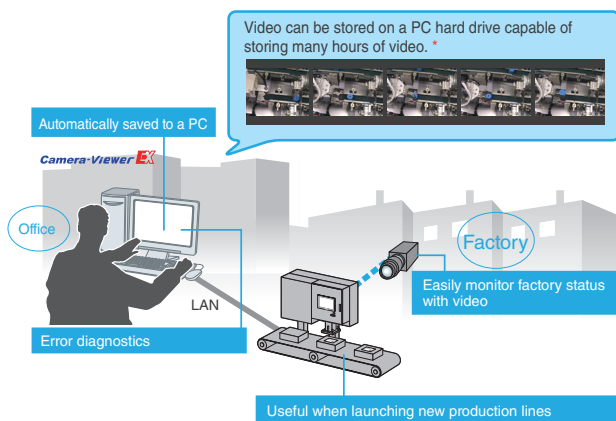
Screen Remote Monitoring **GP-Viewer EX**

You can remotely monitor GP screens on computers far from the worksite. *2



Camera Remote Monitoring **Camera-Viewer EX**

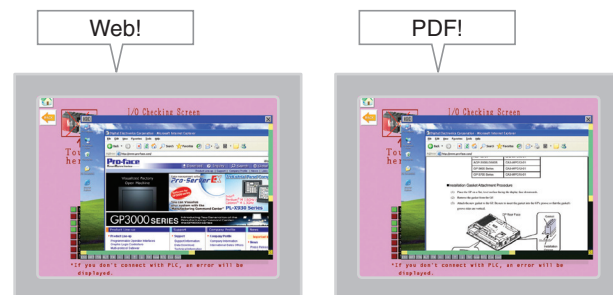
Camera-Viewer EX allows you to use an office PC to view in real-time, record and play video from a remote camera connected to a GP. *2



* A brief delay of about one second may occur during real-time monitoring.

Remote PC Access **RPA**

With the RPA function, an operation manual on the office PC can be displayed on a GP. *2



*1 To use Pro-Server EX, separate software must be purchased.

*2 To use GP-Viewer EX, Camera-Viewer EX, WinGP, RPA, a separate license must be purchased.

Connectable Devices

For further information of supported models and options, and cable diagrams, refer to PLC Connection Manual.

PLC	
Manufacture	Series
ABB	COMLI
Beckhoff Automation GmbH	TwinCAT AMS/ADS
CoDeSys Automation Alliance	CoDeSys SIO, CoDeSys Ethernet, CoDeSys V3.0 Ethernet
Control Techniques Limited	Control Techniques Modbus SIO, Control Techniques Modbus TCP
Control Technology Corp.	2700 Series
FANUC LTD.	Fanuc Power Mate Series, Fanuc Power Mate i Series, Fanuc Series
Fatek Automation Corp.	FBs, FBe/FBn
Fuji Electric Co., Ltd.	MICREX-F, MICREX-SX, SPH
GE Intelligent Platforms	Series 90-30, Series 90-70, VersaMax Micro, PACSystem RX7I
Hitachi Industrial Equipment Systems Co., Ltd.	H, EH-150, MICRO-EH, Web Controller, EHV
Hitachi, Ltd.	S10V, HIDIC-S10a, S10mini
JTEKT Corporation	TOYOPUC-PC2/PC3J/PC3JT/PC3/PS10G
KEYENCE CORPORATION	KV-700/1000/3000/5000/5500, KV Series, Visual KV Series, KV nano
KOYO ELECTRONICS INDUSTRIES CO., LTD.	KOSTAC SG/SU/SZ/P23/SR, DL205/305/405, Direct Logic05/06
LS Industrial Systems Co., Ltd.	GLOFA Series, K1000S, K300S, K200S, K120S, K80S, XGK, XGB, XGT, GM1, GM2, GM3, GM4, GM6, GM7, GM7U
MEIDENSHA CORPORATION	UNISEQUE
Mitsubishi Electric Corporation	MELSEC Q(A mode), MELSEC QnA, MELSEC Q, MELSEC L, MELSEC FX, MELSEC A
Mitsubishi Heavy Industries, Ltd.	DIASYS Netmation, UP/V
OMRON Corporation	SYSMAC C/a/CV, CS1/CJ1/CJ2/CP1/CP1E/NJ
Panasonic Electric Works SUNX Co., Ltd.	FP
Rockwell Automation, Inc.	SLC500, PLC-5, ControlLogix, MicroLogix, CompactLogix
Saia-Burgess Controls Ltd.	PCD1, PCD2, PCD3, PCD4, PCD6
Schneider Electric SA	Nano, Micro, Premium, Twido, Quantum, Momentum, MODBUS communication devices
Sharp Manufacturing Systems Corporation	JW10, JW20H, JW30H, JW50H, JW70H, JW100, JW300
SICK AG	Flexi Soft
Siemens AG	SIMATIC S7-200/S7-300/S7-400/, S7-1200, LOGO! Series, 90U - 115U Series, 135U/155U Series, S5 Series
Siemens Building Technologies	SAPHIR
TOSHIBA CORPORATION	T Series, V Series, EX Series
TOSHIBA MACHINE CO., LTD.	TC200, TC200S, TCmini
YASKAWA Electric Corporation	Control Pack, MP900, MP2000, MP3000, MEMOCON GL, MEMOCON SC, MEMOCON Micro
Yokogawa Electric Corporation	FA-M3, FCN, FCJ
Crouzet Automatismes SAS	Millenium 3 Smart Millenium 3 Essential

Temperature Controller	
Manufacture	Series
Azbil Corporation (formerly Yamatake Corporation)	SDC10, SDC15, SDC20 / SDC21, SDC25 / SDC26, SDC30 / SDC31, SDC35 / SDC36, SDC40A, SDC40B, SDC40G, SDC45 / SDC46, DMC10, DMC50, DCP31, DCP32, DCP551, DCP552, CMC10B, NX
CHINO CORPORATION	DB, KP, LT, JU, JW
Fuji Electric Co., Ltd.	PXH, PXG, PXR(AutoFIX), PXR(NoAutoFIX), PUM
OMRON Corporation	THERMAC NEO, THERMAC R, In-Panel NEO
RKC INSTRUMENT INC.	CB, FB400/FB900, HA400/HA900, MA900, MA901, SRV, SRX, SA100, SA200, SR Mini HG(H-PCP-A), SR Mini HG(H-PCP-A/B), SR Mini HG(H-PCP-J), REX-F9000, REX-F, REX-D, REX-G9, REX-P300, REX-P250, REX-AD, REX-PG, AE500, LE100, SRZ(Z-TIO), SRZ(Z-DIO), SRZ(Z-CT), SRZ(Z-COM)
Shinko Technos Co., Ltd.	C, FC, FIR, GC, JC, AC, NC, DC, FCL, PC-900
Yokogawa Electric Corporation	Temperature Controllers UT100 Series, Digital Indicating Controllers, UT2000

Inverter/Servo	
Manufacture	Series
Fuji Electric Co., Ltd.	FRENIC5000G11S, FRENIC5000P11S, FVR-E11S, FVR-C11S, FRENIC-MEGA, FRENIC-Mini, FRENIC-Eco, FRENIC-Multi
Hitachi Industrial Equipment Systems Co., Ltd.	L300P, SJ300, SJ700, SJ700-2, SJH300, HFC-VAH3, X200, SJ200, L200, WJ200
Lenze SE	Lecom 2102 series
Mitsubishi Electric Corporation	FR-A700, FR-A701, FR-E700, FR-F700, FR-A500, FR-C500, FR-A500L, FR-E500, FR-F500, FR-F500J, FR-F500L, FR-S500, FR-V500, FR-V500L, FR-B, B3(A500), FR-B, B3(A700)
Sanmei Electronics Co., LTD.	Si2, CulyAxis2, CulyAxis3
YASKAWA Electric Corporation	Varispeed AC, Varispeed F7, Varispeed F7S, Varispeed G7, Varispeed L7, VS mini J7, VS mini V7/VS-606V7, A1000, V1000, J1000, Analog Voltage/ Pulse Train Reference Type SERVOPACKs For Rotary Servomotors, Analog Voltage/Pulse Train Reference Type SERVOPACKs For Linear Servomotors, Σ-V Series Rotary Motors (M-II), Σ-V Series Linear Motors (M-II), Σ-V Series Rotary Motors (M-III), Σ-V Series Linear Motors (M-III)
Delta-TAU Data Systems, Inc	PMAC, Turbo PMAC

Industrial Robot	
Manufacture	Series
Hyundai Heavy Industries	Hi4 Robot, Hi5 Robot
IAI Corporation	PCON, ACON, SCON, ERC2, ROBONET, X-SEL(Linear Actuator Controller), X-SEL(SCARA Robot Controller), SSEL, ASEL, PSEL, Table-Top Actuator
Yamaha Motor Co., Ltd.	TS-S, TS-X, TS-P
Yaskawa Electric Corporation	DX100, DX200, FS100
SMC Corporation	LECA6, LECP6
Denso Wave Incorporated	RC7, RC8

Other Devices	
Manufacture	Series
Azbil Corporation (formerly Yamatake Corporation)	PBC Series, CMS Series, CMQ-V Series, CMF Series, MPC Series, MVF Series, CML Series, AUR350C Series, AUR450C Series, RX Series
Cognex Corporation	In-Sight 5000 Series Vision Systems, In-Sight Micro Vision Systems
Digital Electronics Corporation	PC or Micro computer board etc., SIO communication devices, Ethernet communication devices
IEC Standard	IEC 60870-5-101
Modbus-IDA	MODBUS Compatible External Device, MODBUS Slave Device
ODVA(Open DeviceNet Vendor Association, Inc.)	EtherNet/IP communication devices
Seiko Epson Corporation	RC700

For further informations, visit our website.

www.proface.eu/product/soft/gpproex/driver/driver.html





Pro-face

for the best interface

We are always striving to bring you the high quality interface designed to provide a cohesive, evolving connection between customers and high quality products, service and support from around the world.

All eyes on the customer make us "the best interface"

*i*ntimacy

Connect intimately with our customers and stakeholders

*i*nteraction

Enhance customer experience through positive interaction

*i*nnovation

Provide benefits to our customers through innovation

⚠ WARNING

HAZARD OF OPERATOR INJURY, OR UNINTENDED EQUIPMENT DAMAGE

Before operating any of these products, be sure to read all related manuals thoroughly.

Failure to follow these instructions can result in death or serious injury, unintended equipment damage.

- For printing purposes, the colors in this catalog may differ from those of the actual unit.
- Actual user screens may differ from the screens shown here.
- Electric equipment should be installed, operated, serviced, and maintained only by qualified personnel. No responsibility is assumed by Digital for any consequences arising out of the use of this material.
- All product names used in this catalog are the registered trademarks or trademarks of their respective companies.
- All information contained in this catalog is subject to change without notice.

European Headquarters
Pro-face Europe B.V.
Hoofddorp, THE NETHERLANDS
Tel: +31 (0)23 55 44 099
Fax: +31 (0)23 55 44 090
www.proface.eu
info@proface.eu

Italy
Pro-face Italia S.p.a.
Bovisio Masciago (Milano), ITALY
Tel: +39 (0)362 59 96 1
Fax: +39 (0)362 59 96 69
www.proface.it
info@proface.it

Spain and Portugal
Pro-face España
Cardedeu (Barcelona), SPAIN
Tel: +34 (0)93 846 07 45
Fax: +34 (0)93 845 48 68
www.proface.es
info@proface.es

Global Headquarters
Digital Electronics Corporation
Osaka, JAPAN
Tel: +81 (0)6 6613 1101
Fax: +81 (0)6 6613 5888
www.pro-face.com
info@pro-face.com

North America
Pro-face America, Inc.
Ann Arbor, MI U.S.A
Tel: +1 734 477 0600
Fax: +1 734 864 7347
www.profaceamerica.com
info@profaceamerica.com

Taiwan
Pro-face Taiwan Co., Ltd.
Taipei, TAIWAN
Tel: +886 (0)2 2657 1121
Fax: +886 (0)2 2657 1021
www.proface.com.tw
proface@proface.com.tw

Austria
Pro-face Europe B.V. (Austria Office)
Hagenberg, AUSTRIA
Tel: +43 7236 3343 620
Fax: +43 7236 3343 629
www.proface.at
info@proface.at

Denmark
Pro-face Northern Europe ApS
Roskilde, DENMARK
Tel: +45 70 22 01 22
Fax: +45 70 22 01 33
www.proface.dk
info@proface.dk

Sweden
Pro-face Sweden AB
Löddeköpinge (Malmö), SWEDEN
Tel: +46 46 540 90 70
Fax: +46 46 71 27 90
www.proface.se
info@proface.se

Australia and New Zealand
Pro-face Australia
Mt. Waverley, AUSTRALIA
Tel: +61 (0)3 9550 7396
Fax: +61 (0)3 9550 7390
www.pro-face.com.au www.pro-face.co.nz
pfau@pro-face.com

Singapore
Pro-face Singapore
TechPoint, Singapore
Tel: +65-6832-5533
Fax: +65-6415-1605
www.proface.sg
info@proface.sg

Indonesia
Pro-face Indonesia
Jakarta, Indonesia
Tel: +62 (0)21 7504419
Fax: +62 (0)21 7511650

France
Pro-face France S.A.S.
Mitry-Mory, FRANCE
Tel: +33 (0)1 60 21 22 91
Fax: +33 (0)1 60 21 22 92
www.proface.fr
info@proface.fr

Poland
Pro-face Europe B.V. (Warsaw Office)
Warszawa, POLAND
Tel: +48 (22) 465 66 62
Fax: +48 (22) 465 66 67
www.proface.pl
info@proface.pl

Switzerland
Pro-face Schweiz GmbH
Regensdorf, SWITZERLAND
Tel: +41 (0)43 343 7272
Fax: +41 (0)43 343 7279
www.proface.ch
info@proface.ch

China
Pro-face China International Trading Co., Ltd.
Shanghai, P. R. CHINA
Tel: +86 (0)21 6361 5175
Fax: +86 (0)21 6361 5176
www.proface.com.cn
proface@proface.com.cn

South-East Asia Pacific
Pro-face South-East Asia Pacific Co., Ltd.
Bangkok, THAILAND
Tel: +66 (0)2 617 5678
Fax: +66 (0)2 617 5688
www.proface.co.th
pfsales@proface.co.th

Germany
Pro-face Deutschland GmbH
Solingen, GERMANY
Tel: +49 (0)212 258 260
Fax: +49 (0)212 258 2640
www.proface.de
info@proface.de

Russia
Pro-face Europe B.V. (Russia Office)
Saint-Petersburg, RUSSIA
Tel: +7 (812) 336 47 06
Fax: +7 (812) 336 47 18
www.pro-face.ru
info@pro-face.ru

United Kingdom
Pro-face UK Ltd
Coventry, ENGLAND
Tel: +44 (0)2476 511288
Fax: +44 (0)2476 511499
www.proface.co.uk
info@proface.co.uk

India
Pro-face India
Bangalore, INDIA
Tel: +91 80 4333 3540/3541
Fax: +91 80 4333 3222
www.proface.co.in
sales.proface@proface.co.in

South Korea
Pro-face Korea Co., Ltd.
Seoul, SOUTH KOREA
Tel: +82 (0)2 2630 9850
Fax: +82 (0)2 2630 9860
www.proface.co.kr
proface@proface.co.kr