

Pro-face

for the best interface

Globally Recognized

Globally Trusted

Globally Supported

Locally Agile





Pro-face

for the best interface

Index

Your Choice of Platform	4-5
HMI Overview	6-9
IPC Overview	10-11
Software Overview	12-13
Third Party Driver Support	14
Operating Environment	15
Service & Support	16-17

Pro-face America

profaceamerica.com

1050 Highland Drive, Suite D., Ann Arbor, MI 48108

734-477-0600 | 800-289-9266

customercare@profaceamerica.com



A Global Leader for 40+ Years

For over 40 years, Pro-face has set the standard for Human Machine Interface and Industrial Personal Computers. A global company, with a local presence, Pro-face provides global product availability, support, and service.

While we are global, it's our local presence that makes us agile, and able to provide our customers with world class products, and industry leading support. From our state-of-the-art facility in Ann Arbor Michigan, we are able to provide local product assembly and customization, training, repair, and technical support that makes your decision to use Pro-face a wise one.

Pro-face helps manufacturers, big and small, solve their toughest factory problems and make their companies efficient, automated and profitable. As an ISO9001 certified company, Pro-face was the first company to produce a touch screen flat panel operator interface, and our hardware and software connects to more third party devices than any others in the industry. But what really sets us apart is our commitment to be a true partner with our customers.



Local Assembly

We listen to you, our customer, and custom build iPC's to your specifications right here in our state-of-the-art facility in Ann Arbor, Michigan. All iPC's are assembled by hand and tested by our experienced technicians, who see the products through from beginning to end.

▶ Training

Pro-face offers hands-on training both at our corporate office and at your facility to ensure that you are comfortable utilizing the capabilities of your HMI and iPC. In addition, a large library of web based training is at your fingertips.

▶ Repair

Should your HMI or iPC need repair or refurbishment, Pro-face America has the fastest turn around repair service in the industry with an average of just three days.

Tech Support

Pro-face offers industry leading tech support at no cost. Real time, live help to answer your questions and get your applications running and your problems solved.

- + Our FREE technical support website has been upgraded with services aimed at reducing development man-hours by offering FAQ, Driver Downloads, Manual downloads, Application Notes, and much more.

People

At Pro-face, it's not only our products that are industry leading, but also our people. Whether its tech support, application engineering, customer care, or the ability to custom assemble and ship products rapidly, Pro-face provides customer service that continuously delivers.



+
Unparalleled
Connectivity

Your Choice of Platform

HMI



GP4000 Series +

The GP4000 Series offers touch screen displays with extensive simultaneous multi-protocol connectivity. The HMI to use for data sharing and data acquisition applications. Includes CF, video, Ethernet, serial and USB connectivity.

HMI + Control



LT3000 + LT4000 Series +

The LT3000 operator interface family combines PLC functionality integrated with an HMI to create a cost effective, high value machine interface solution.

The LT4000M provides both HMI and digital analog control in a single unit. A unique modular style allows the display and rear module to be mounted directly (to each other) or separately (connected by a 3 or 5m cable).



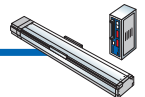
Temperature Controllers



Scanners



Drives



Motion Controllers



PLCs



Vision Systems



Sensors



Switches

**Flexible and Easy Installation
with Compact Configurations**

22mm Hole Mounting

**LT4000M
Series** +



iPC



PS4000 Series +

The PS4000 Series offers extensive connectivity, high performance, energy efficient processor options, and quick and easy storage expansion.

Flat Panel Monitors



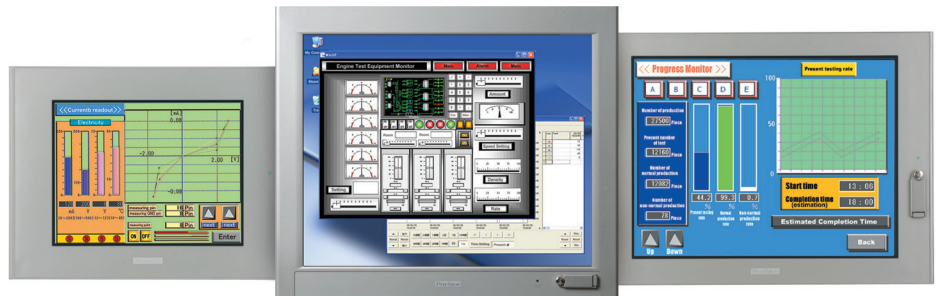
+ **Numpad**



+ **Fingerprint Recognition Unit**



+ **Illuminated Switch**



FP3000 Series +

Pro-face Flat Panel Monitors offer a wide range of display sizes, from 10.4" to 19" TFT color with enhanced resolution that will meet the needs of your application(s). They are all extensively certified and with Pro-face Investment Protection, you can minimize product migration costs by maintaining hardware cutout compatibility as new models join our family of products.

HMI Overview

Standard

12.1 inch
Standard Model

AC 100-240V
DC 24V

GP-4601T / GP-4603T

Isolated MPI Communication Port



10.4 inch
Standard Model

AC 100-240V
DC 24V

GP-4501T / GP-4503T

Isolated MPI Communication Port



Display (Resolution)	65,536 color TFT (800 x 600 pixels)	65,536 color TFT (640 x 480 pixels)
Brightness Control	16 Level Brightness	
Touch Panel Type	Analog or Matrix (Supports 2 point touch)	
Memory	FEPROM 32MB (Application Memory), 320KB (Backup for HMI), 64KB (Backup for Control)	
Ethernet	x1 (IEEE802.3i / IEEE802.3u, 10BASE-T/100BASE-TX)	
SIO	COM x 2	
SD Card Slot	x1	
USB	Type-A (2.0) x 1, mini-B (2.0) x 1	
Replaceable Battery	Yes	

7.5 inch
Standard Model

DC 24V

GP-4401T



5.7 inch
Standard Model

DC 24V

GP4301T / GP-4303T

Isolated MPI Communication Port



3.5 inch
Standard Model

DC 24V

GP-4201T / GP-4203T

Isolated MPI Communication Port



Display (Resolution)	65,536 color TFT (640 x 480 pixels)	65,536 color TFT (320 x 240 pixels)
Brightness Control	16 Level Brightness	
Touch Panel Type	Resistive Film (Analog)	
Memory	FEPROM 32MB (Application Memory)	FEPROM 16MB (Application Memory), 320KB (Backup for HMI), 64KB (Backup for Control)
Ethernet	x1 (IEEE802.3i / IEEE802.3u, 10BASE-T/100BASE-TX)	
SIO	COM x 2	COM x 1
SD Card Slot	x1	No
USB	Type-A (2.0) x 1, mini-B (2.0) x 1	
Replaceable Battery	Yes	Contact Pro-face

W Model

10.4 inch DC 24V
W Model

GP-4501TW



7.0 inch DC 24V
W Model

GP-4401WW



5.7 inch DC 24V
W Model

GP-4301TW



3.5 inch DC 24V
W Model

GP-4201TW



Display (Resolution)	65,536 color TFT (640 x 600 pixels)	65,536 color TFT (800 x 480 pixels)	65,536 color TFT (320 x 240 pixels)
Brightness Control	8 Level Brightness		
Touch Panel Type	Resistive Film (Analog)		
Memory	FEPR0M 16MB (Application Memory), 128KB (Backup for HMI)		FEPR0M 8MB (Application Memory), 128KB (Backup for HMI)
Ethernet	x1 (IEEE802.3i / IEEE802.3u, 10BASE-T/100BASE-TX)		No
SIO	COM x 2		
SD Card Slot	x1	No	
USB	Type-A (2.0) x 1, mini-B (2.0) x 1		
Replaceable Battery	Yes	Contact Pro-face	

Modular

5.7 inch DC 24V
Modular Type

GP-4301TM



3.5 inch DC 24V
Modular Type

GP-4201TM



3.4 inch DC 24V
Compact Type

AGP-4100



Display (Resolution)	65,536 color TFT (320 x 240 pixels)	Monochrome LCD (200 x 80 pixels)
Brightness Control	16 Level Brightness	
Touch Panel Type	Resistive Film (Analog)	
Memory	FEPR0M 8MB (Application Memory), Equivalent to 128kb *1 (Backup for HMI)	FEPR0M 2.2MB
Ethernet	x1 (IEEE802.3i / IEEE802.3u, 10BASE-T/100BASE-TX)	x1 (IEEE802.3u / IEEE802.3u, 10BASE-T/100BASE-TX) *2
SIO	COM x 1	COM x 1 *3
SD Card Slot	No	
USB	Type-A (2.0) x 1, mini-B (2.0) x 1	
Replaceable Battery	Contact Pro-face	

*1 Application Memory can provide 128KB for Data Backup. For supported features, please refer to GP-Pro EX Reference Manual. *2 AGP4104 only. *3 AGP4104 has ethernet only.

HMI Overview

Control

All-In-One Operator Interface plus Control

5.7 inch

Control Type

DC 24V

LT3300



3.8 inch

Control Type

DC 24V

LT3200



Display Resolution	320 x 240 pixels (QVGA)	
Display Type	Monochrome Black/White LCD or TFT Color LCD	Monochrome Amber/Red LCD
Display Colors	65,536 colors (no blink) / 16,384 colors (blink)	8 shades
Input Voltage	24 VDC	
USB	Type A (1.1) x 1	
I/O Expansion	Mix & Match any 3 EX Modules	Mix & match any 2 EX Modules
Embedded Digital I/O	16 in / 16 out	12 in / 6 out

Modular + Control



Touchscreen Operator Interface plus Control, with 22mm mounting

5.7 inch

Modular Type

DC 24V

LT4301TM



3.5 inch

Modular Type

DC 24V

LT4201TM



Display Resolution	320 x 240 pixels (QVGA)	
Display Type	TFT Color LCD	
Display Colors	65,536 Colors	
Input Voltage	24 VDC	
USB	Type-A (2.0) x 1, mini-B (2.0) x 1	
Embedded Analog I/O	4 in / 2 out	
Embedded Digital I/O	12 in / 8 out or 20 in / 12 out	

Handheld HMI

Touchscreen Operator Interface with 11 Function Keys and Dual Protocol Support

5.7 inch

Handheld

DC 24V

AGP33x0H



Display Type	Monochrome LCD	STN Color LCD	TFT Color LCD
Display Colors	Black, White (16 shades)	4,096 Colors	65,536 Colors
Function Keys	11 keys		
USB	Type-A (1.1) x 1		
Ethernet	x 1 (IEEE802.3i / IEEE802.3u, 10BASE-T / 100BASE-TX)		
CF Card Slot	Type II x 1		
Serial Ports	RS-232C / 422 / 485		

HMI Connectable Devices



EZ Series HMI accessories easily connected by USB

USB connection

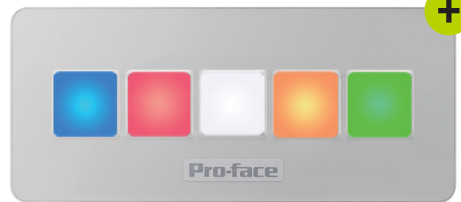
22mm Hole Mounting

DC 24V

EZ Numpad



EZ Illuminated Switch



EZ Fingerprint Recognition Unit



Switch between input & function keys	5 switches with multi-colored LEDs	HMI access by fingerprint, not password
Extend screen lifetime	Tactile Switches	100 users (2 records for one user)
Gives tactile feedback to operator	Changeable among 6 colors, 3 speed blinking	15 levels of security (set by HMI)
Easy operation in harsh environments	LED Colors : Red, Green, Yellow, Blue, White, Orange	Traceability of users & operations by HMI
Connects to GP4000M, GP4000, LT4000M		
Connects to HMI via USB cable with only a 22mm mounting hole		
GP-Pro EX v. 3.1 or later		

iPC Overview

Node Box

1 Slot DC 24V

Atom N270 (1.6 GHz) / Core2Duo (2.26 GHz)

PS4000B

2 Slot DC 24V

Atom N270 (1.6 GHz) / Core2Duo (2.26 GHz)

PS4000B

5 Slot DC 24V

Core2Duo (2.26 GHz)

PS4000B

Ram	Atom N270: 1GB to 3GB Core2Duo: 2GB to 8GB
Storage Temperature	-20 to 60° C (-4 to 140° F)
Ethernet	1
Serial Port	x 2
USB	x 5
Input Voltage	24Vdc
Processor Speed	Core2Duo: 2.26 GHz Atom N270: 1.6 GHz
Power Consumption	Core2Duo: 90W (max) Atom N270: 60W (max)



Mate this industrial computer with one of Pro-face's Flat Panel Monitors for a complete industrial computing solution. The PS4000B can also be installed remotely from one of our FP3000 Series units.

Flat Panel Monitors

19 inch AC 100-240V
DVI I/F

FP3900T

15 inch AC 100-240V
DVI I/F DC 24V

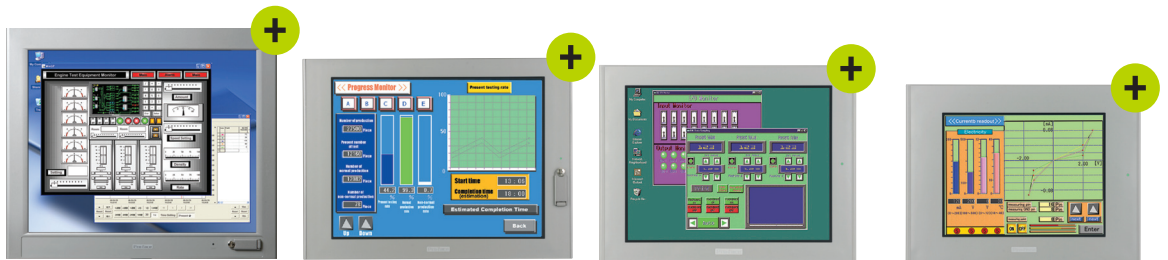
FP3710T

12.1 inch AC 100-240V
DVI I/F DC 24V

FP36x0T

10.4 inch AC 100-240V
DVI I/F DC 24V

FP3500T



Display Resolution	1280 x 1024 pixels (SXGA)	1024 x 768 pixels (XGA)		680 x 480 pixels (VGA)
Display Type	TFT Color LCD			
Display Colors	16,777,216 Colors		262,144 Colors	
Display Area	376.32 x 301.06 mm	304.1 x 228.1mm	245.76 x 184.32 mm	211.2 x 158.4 mm
Touch Screen	Resistive Film (analog)			
Touch Screen Interface	RS-232C or USB (Type B, USB 2.0 compatible)			
USB	Type-A 2.0 (when flat panel monitor USB is connected to PC) x 1			
USB Location	Rear or Front		Bottom	
Video	VGA Interface (analog RGB) or DVI-D Interface Connector			

Panel PC



12 inch AC 100-240V
DC 24V

PS4600



15 inch AC 100-240V
DC 24V

PS4700



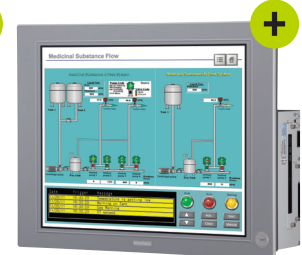
15 inch DC 24V

PS4700 (Z510)



19 inch AC 100-240V
DC 24V

PS4800



Slot	PCI x 1/PCIe x 1, PCI x 2/PCIe x 3, PCI x 1/PCIe x 4, PCI x 1	PCI x 0, PCI Slot x 1, PCI Slot x 2, PCI x 1/PCIe x 1	PCI x 0	PCI x 0, PCI Slot x 1, PCI Slot x 2, PCI x 1/PCIe x 1
Ram	2GB to 8GB	1GB to 3GB (Atom N270) 2GB to 8GB (Core2Duo)	1 GB to 2GB	1GB to 3GB (Atom N270) 2GB to 8GB (Core2Duo)
Display Type	TFT Color LCD			
Touch Screen	Resistive Film (Analog)			
Ethernet	Yes			
Display Area	W 245.76mm x H 184.32mm [9.68 x 7.26 in]	W 383.5 x H 282.5 mm [15.10 x 11.12 in]		W 459.5 x H 359.5 mm [18.09 x 14.15 in]
Serial Port	x 2	x 2	x 1	x 2
USB	x 5	x 5	x 3	x 5
Input Voltage	24Vdc / 100 to 240 Vac	24Vdc / 100 to 240 Vac	24Vdc	24Vdc / 100 to 240 Vac
Display Resolution	1024 x 768 pixels (XGA)			
Stainless Bezel	Yes			
Processor	Celeron M 827e (1.4 GHz) / Core i3 3217ue (1.6 GHz)	Atom N270 (1.6 GHz) / Core2Duo (2.26 GHz)	Atom Z510 (1.1 GHz)	Atom N270 (1.6 GHz) / Core2Duo (2.26 GHz)



ISO 9001:2000
Quality System Certified

ISO 14000
Quality System Certified



Extend Product Part Life with large heat sink & intelligent fan



Easily Replaceable "Slide-In Slot" HDD/SSD Drive

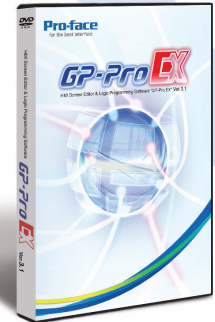


Reliable Operation with a Disk-less System

Software Overview

HMI Screen Editor & Logic Programming Software

GP-Pro EX⁺



Create Your HMI Application in Minutes

GP-Pro EX is the easy-to-use development software for Pro-face HMI and IPC units. With a wide array of application development tools, expanded diagnostic features and simulation capabilities, GP-Pro EX is capable of handling the most demanding HMI applications.

Set up communications

- Choose and set up PLC and third-party devices effortlessly
- System settings are logically arranged and easy to find

Design application/screens

- Drag-and-drop addressing, parts and colors
- Efficient features to reduce development time
- Create consistent look and feel using the user-defined templates

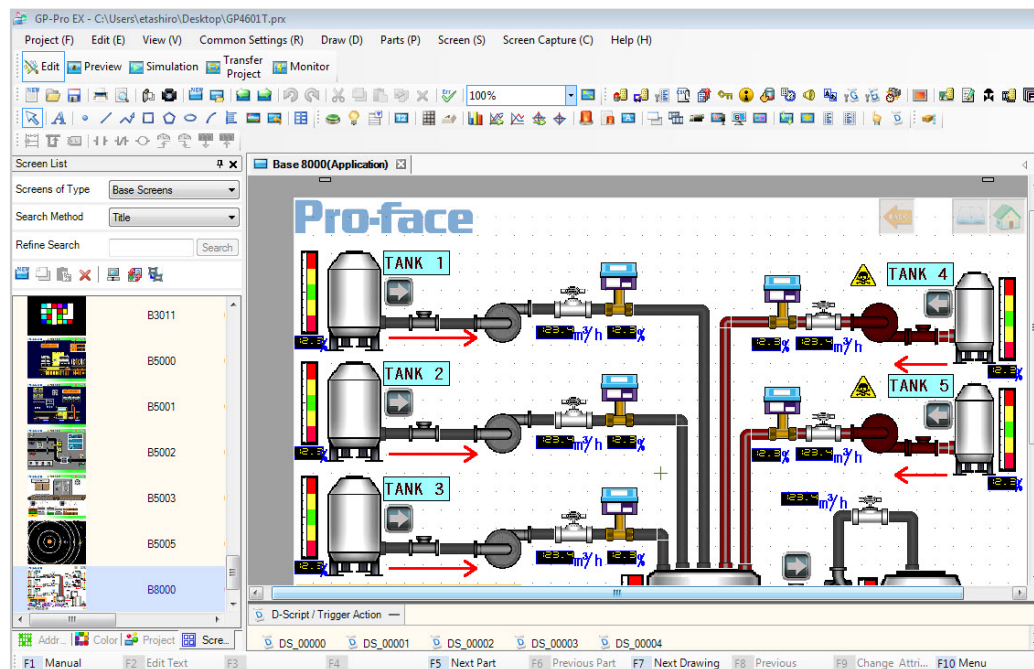
Simulate and test

- Verify before you travel
- Debug your application without hardware
- Test without downloading

Download/transfer

- Tamper-proof HMI application – password-protected project source

One development software for both dedicated and open windows-based operator interfaces.



View over 20 GP-Pro EX technical videos on YouTube.

[GP-Pro EX Playlist](#)

Download the Pro-face Software Guide on iTunes or Google Play.



Data management software

Pro-Server EX⁺

Enterprise-wide data collecting, sharing, connectivity solution ▶

- Applications
- Collect and Manage Data
- Connectivity Support



Control Room

Plant Floor



Pro-face open-platform HMI



Application software for sharing user-defined factory-floor data throughout the corporate enterprise

- + GP-Viewer**
Monitor and Control Multiple Operator Interfaces from a Single Remote PC.
- + Camera Viewer**
Record, Display and Playback Live Video of Industrial Operations on a Remote PC.
- + Pass Through**
Programming and monitoring PLC via operator interface.
- + Remote PC Access**
Harness the power of a PC from your dedicated HMI.
- + Memory Loader**
Field maintenance and backup with data protection.
- + Transfer Tool**
Easy machine maintenance and data log retrieval.
- + WebServer**
View HMI information and alerts through a web browser.
- + Remote HMI**
▶ Monitor & control HMI screens from a smart phone or tablet (data input, send work instruction, etc.).
- + WinGP**
Runtime software for GP-Pro EX created applications.
- + FTP Server**
Upload and download data files to the operator interface over the internet.

Third-Party Driver Support

PLC

Beckhoff Automation
 CoDeSys Automation Alliance
 Control Technology Corporation
 Crouzet Millenium
 CC-Link Partner Association
 Delta-TAU data system, inc.
 Digital Electronics Corporation
 Emerson Process Management
 FATEK AUTOMATION Corporation
 Fuji Electric Co.
 FANUC LTD.
 GE Intelligent
 GE Fanuc Automation
 Hitachi IES Co.
 Hitachi, Ltd.
 JTEKT Corporation
 KEYENCE Corporation
 KOYO ELECTRONICS CO.
 LS Industrial Systems
 MEIDENSHA Corporation
 Mitsubishi Electric Corporation
 Mitsubishi Heavy Industries
 MODBUS IDA

ODVA

OMRON Corporation
 Panasonic Electric Works
 Rockwell Automation, Inc.
 Saia-Burgess Controls Ltd.
 Schneider Electric Industries
 Sharp Manufacturing Systems Corp.
 SICK AG
 Siemens AG
 Siemens Building Technologies
 TOSHIBA Corporation
 TOSHIBA MACHINE Co.
 YASKAWA Electric Corporation

Temperature Controllers

Azbil Corporation (Former Yamatake)
 Fuji Electric Systems Co.
 Azbil Corporation Controller
 CHINO Corporation
 Shinko Technos Co.
 YOKOGAWA Electric Corp.
 RKC INSTRUMENT INC.
 OMRON Corporation
 RKC INSTRUMENT INC.

Inverters

Fuji Electric Systems Co.
 Hitachi IES Co., Ltd.
 Hitachi IES Co., Ltd.
 YASKAWA Electric Corporation
 Mitsubishi Electric Corporation

Servos

Sanmei Electronics Co.0
 YASKAWA Electric Corporation

Industrial Robots

DENSO WAVE INCORPORATED
 Hyundai Heavy Industries
 IAI Corporation
 Seiko Epson Corporation
 YASKAWA Electric Corporation
 Yamaha Motor Co.

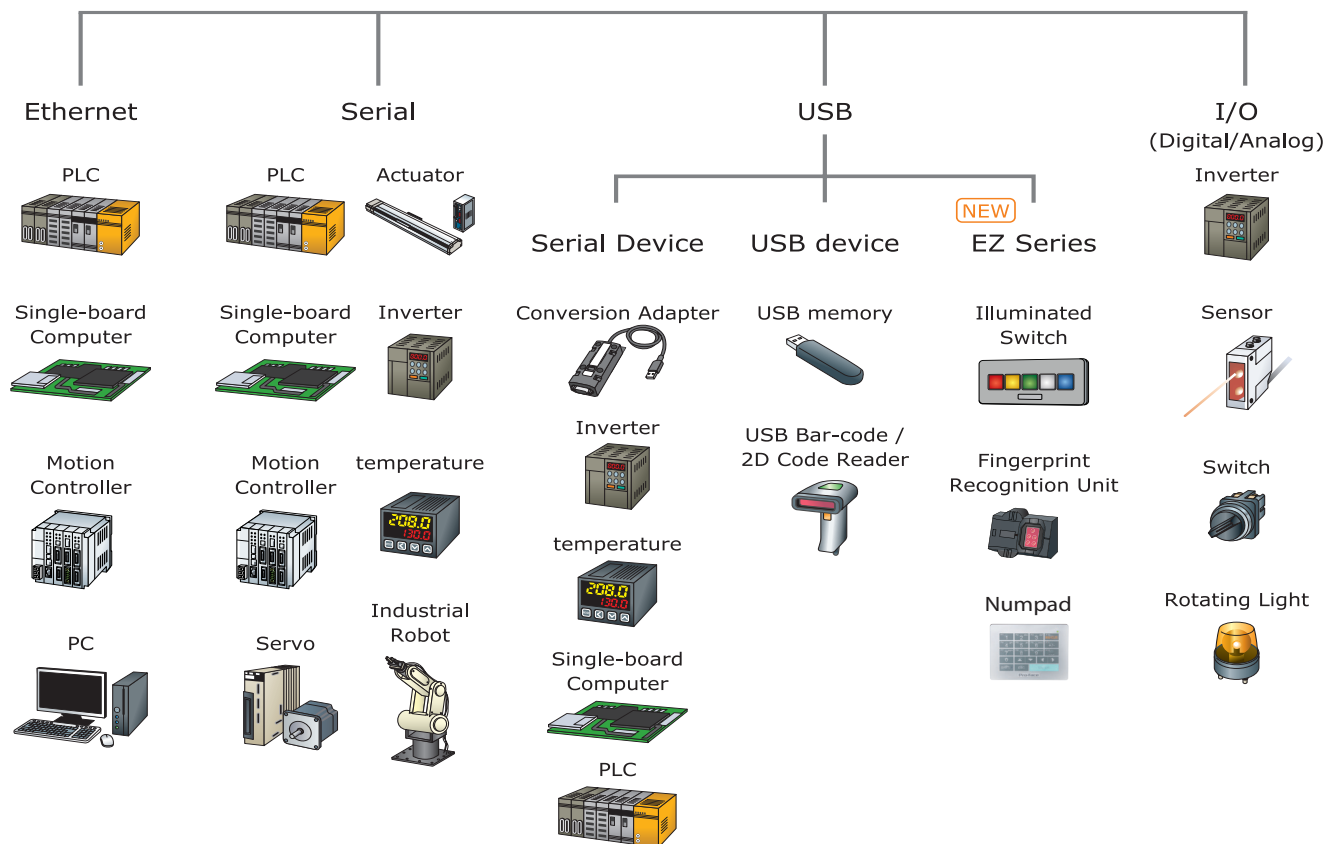
Vision Sensors

Banner Engineering Presence

We support Barcode scanners, 2-D Readers, and Printers from companies such as Aimex Corp., OPT Electronics, Denso Co., HHP, Cognex, Symbol, Epson, NEC, and more!



Software Updates & Drivers



The World Leader in Third-Party Driver Support

Operating Environment

● GP-Pro EX v.3.6

OS	Windows® 2000, Windows XP 32-bit OS, Windows Vista® 32-bit OS, Windows 7 32-bit/64-bit OS, Windows 8 32-bit/64-bit OS *For the installation of this product, administrator rights are required.
CPU	Windows 8 - Pentium® IV 1.3GHz or greater Other than Windows 8 - Pentium III 800MHz or greater
Resolution	SVGA 800 × 600 or better (256 colors or greater required)
Memory	Windows 8/7/Vista - 1GB or greater (2GB or greater recommended) Other than Windows 8/7/Vista- 512MB or greater (1GB or greater recommended)
Hard Disk Space	1GB or greater *Free space necessary for installation.
Language	Software Menu English, Japanese, Korean*, Chinese*, German*, French*, Italian*, Spanish*, *These languages are supported.
	Languages that Hardware can Display English/ Japanese/ Korean/ Chinese (simplified/traditional) / Cyrillic/ Thai *For languages other than English / Japanese, FEPs and fonts for these languages should be added.
FEP for Languages	Those supported by OS described above.
Other	.NET Framework Ver. 2.0 * On a PC without .NET Framework Ver. 2.0, this product is automatically installed.
	Microsoft® Internet Explorer Ver. 6.0 or later Adobe Reader® Ver. 6.0.2 or later
	Mouse (absolutely necessary), CD-ROM drive (necessary only for software installation) and printer (supported by the OS above) An environment where you are connected to the Internet * Only necessary for online user registration and online update service

*Please address inquiries about the site license to a sales representative.
*A USB port or Ethernet port is required to transfer screens on a PC.

● Transfer Tool (Only necessary for Transfer Tool installation)

OS	Windows® 2000, Windows XP 32-bit OS, Windows Vista® 32-bit OS, Windows 7 32-bit/64-bit OS, Windows 8 32-bit/64-bit OS *For the installation of this product, administrator rights are required.
CPU	Windows 8/7/Vista : Pentium® IV 1GHz or greater recommended Other than Windows 8/7/Vista : Pentium II 266MHz or greater recommended
Memory	1GB or greater (2GB or greater recommended)
Hard Disk Space	135MB or greater *Free space necessary for installation
Other	Mouse (absolutely necessary), DVD-ROM drive (necessary only for software installation) and printer (supported by the OS above)

*A USB port or Ethernet port is required to transfer screens on a PC.

● Pass-Through

OS	Windows® 2000, Windows XP 32-bit OS, Windows Vista 32-bit OS, Windows 7 32-bit/64-bit OS, Windows 8 32-bit/64-bit OS
-----------	--

● Web Server

OS	Windows 7 32-bit/64-bit OS Windows® 2000, Windows XP 32-bit OS, Windows Vista 32-bit OS, Windows Server 2003 32-bit OS, Windows 7 32-bit/64-bit OS, Windows 8 32-bit/64-bit OS
Supported Browser	Microsoft® Internet Explorer Ver.6.0, 7.0, or 8.0
Screen Resolution	XGA 1024 X 768 or greater

● Pro-Server EX

OS	Windows® 2000, Windows XP, Windows Server 2003, Windows Vista®, Windows 7, Windows 8, Windows Server 2008, Windows Server 2008 R2
CPU	Pentium® III 500MHz or greater (800MHz or greater recommended)
Resolution	SVGA 800 X 600 or greater (256 colors or greater required, only 96dpi font)
Memory	Pro-Server EX Developer: 256MB or greater Pro-Server EX Runtime: 128MB or greater (256MB or greater recommended)
Hard Disk Space	Pro-Server EX Developer: 1.1GB or greater (2.2GB or greater recommended) Pro-Server EX Runtime: 650MB or greater (1.3GB or greater recommended)
Language	English/Japanese
FEP for Languages	Those supported by OS described above.
Other Software	Microsoft® Excel 2000-2010 (for setting the action function)
	Microsoft Access 2000-2010 (for setting the action function)
	Microsoft Internet Explorer Ver.5.0 or later (for setting the action function)
Printer	.NET Framework Ver.2.0
Printer	Any printer if it is supported by the OS
Network Adapter	10BASE-T, 100BASE-TX
Network Configuration	TCP/IP protocol (Configure from "Control Panel" in Windows)

● GP-Viewer EX

OS	Windows® 2000, Windows® XP 32-bit OS, Windows Server 2003, Windows Vista® 32-bit OS, Windows 7 32-bit/64-bit OS, Windows 8 32-bit/64-bit OS *For the installation of this product, administrator rights are required.
-----------	--

● Camera-Viewer EX

OS	Windows® XP 32-bit OS, Windows Server 2003 32-bit OS, Windows Server 2003 R2 32-bit OS, Windows Vista® 32-bit OS, Windows 7 32-bit/64-bit OS, Windows 8 32-bit/64-bit OS *For the installation of this product, Administrator rights are required.
Language	Supported OS languages are Japanese, English, Chinese (Simplified), Chinese (Traditional), and Korean

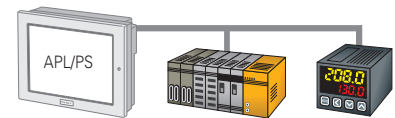
● WinGP GP-Pro EX Runtime for Pro-face Industrial PCs

OS	Windows® XP Professional, Windows XP Embedded, Windows 7 32-bit/64-bit, Windows 8 32-bit/64-bit
Memory	256MB or greater (512MB or greater recommended)

● WinGP GP-Pro EX Runtime for 3rd party Industrial PCs

OS	Windows XP, Windows Vista® 32bit, Windows 7 32-bit/64-bit, Windows 8 32-bit/64-bit
CPU	Pentium® M 1GHz or greater recommended
Display Resolution	SVGA 800×600 or better
Memory	Windows 8/7/Vista: 1GB or greater (2GB or greater recommended) Other than Windows 8/7/Vista: 512MB or greater (1GB or greater recommended)
Hard Disk Space	200MB or greater

WinGP allows the same GP-Pro EX application to run on an industrial PC. Makes PC act as an On-Demand Operator Interface.



● Remote PC Access (RPA)

OS	Visit http://www.uvnc.com/
Other	GP-Pro EX (Ver. 2.0 or later), RPA Keycode (EX-RPA, Sold separately), Ultra VNC Ver. 1.0.8.2 should be installed on the PCs on the server, LAN cable, HUB (Commercially available). *Connect one server to one GP.

● Movie Converter (EX-MOVCON-LICENSE)

OS	Windows® 2000, Windows® XP
CPU	Pentium® III 1GHz or greater recommended
Memory	256 MB (512 MB or greater recommended)
Hard Disk Space	60MB or greater *Free space necessary for installation
Other	Mouse (absolutely necessary), DVD-ROM drive (necessary for software installation) Windows® Media Player 9.0, Direct X9.0c

Movie files that can be converted with the movie converter are different depending on the PCs used for conversion. Some codecs are equipped as standard in video/audio players such as Windows® Media Player. When installing the movie converter in an environment just after purchasing a PC, you can convert movie files described above to SDX. For movie files that cannot be converted to SDX, you may be able to convert these files by installing their codecs separately (*).

File format (Extension)	Video codec	Audio codec
AVI	Uncompressed (RGB)	Uncompressed (PCM)
AVI	DV-1	DV Audio
WMV	WMV9	WMA9
MPG	MPEG-1	MPEG-1 Layer-2

*In order to convert movie files, first, you need to install the codec of the movie file to be converted on a PC for conversion. We have confirmed the conversion of the following movie files to SDX on a PC with Ulead Video Studio 9 installed.

File format (Extension)	Video codec	Audio codec
AVI	DV-2	DV Audio
MPG	MPEG-2	MPEG-1 Layer-2
ASF	SD-Video (MPEG-4)	G.726

Ulead Video Studio 9 (<http://www.ulead.co.jp/product/videostudio9/>)
* For installation and use, a license is required. Purchase the license separately.

Note1) The environment recommended by the OS used, or a superior environment, is required for CPU/memory.
Note2) Partial restrictions available when using Windows Vista with Pro-Server EX. Check Website for details.

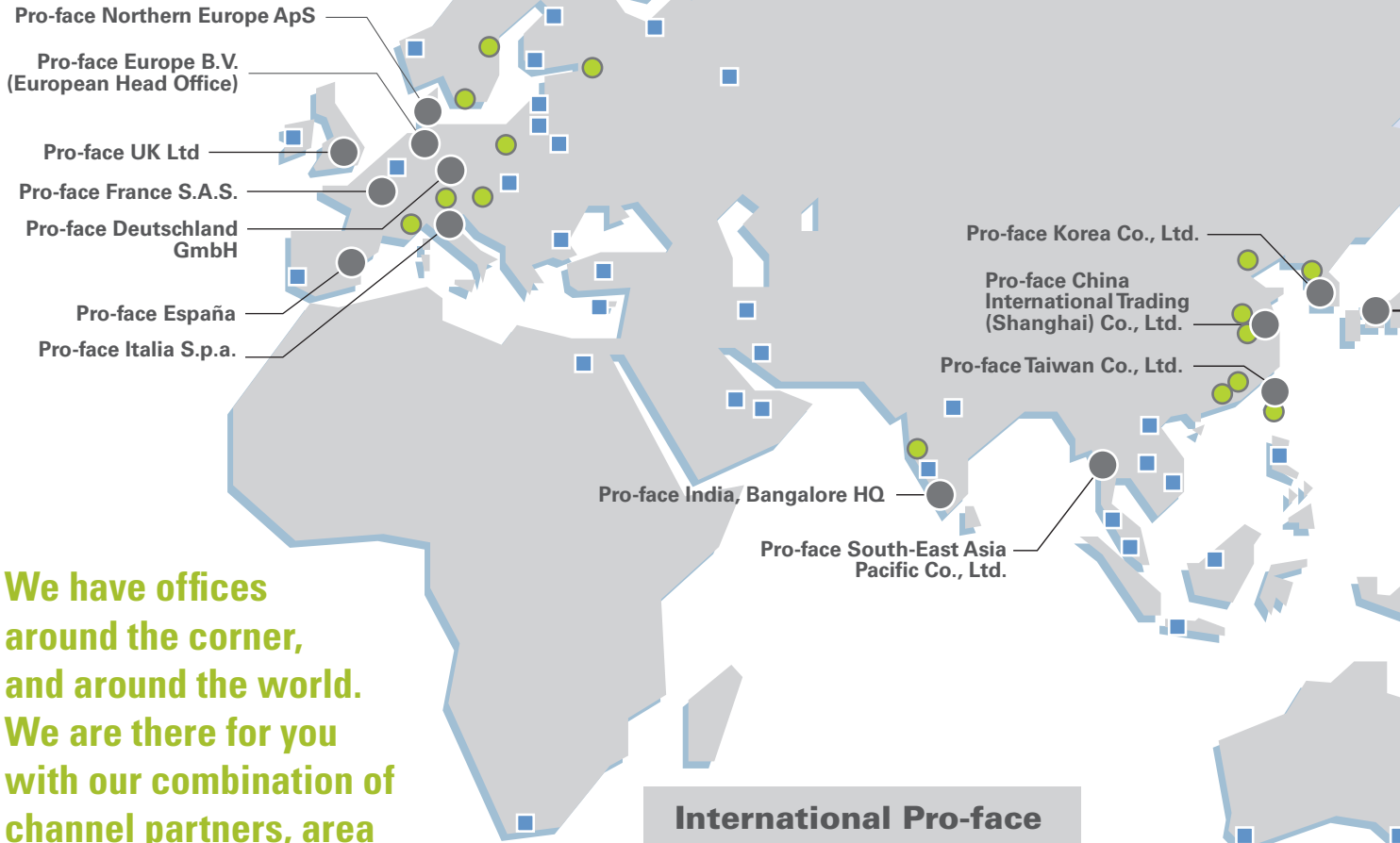
Service & Support



ISO 9001:2000
Quality System Certified

ISO 14000
Quality System Certified

+ Standards & Regulations



We have offices around the corner, and around the world. We are there for you with our combination of channel partners, area sales managers, and trained application engineers to support you before and after the sale.

International Pro-face

- Pro-face Head Office
- Pro-face Branch Office
- Distributor or Sales Representative

Global Support

One of the great features of Pro-face is that the same level of customer support is available in countries where the product is exported to. Overseas customers can receive high quality support in both telephone inquiries and repair services.

FREE Tech Support

Pro-face is committed to delivering excellent technical support whether you are local or abroad. Free, real time solutions.

800-289-9266
support@profaceamerica.com

Repair Services

Pro-face has eliminated loss throughout the entire process by providing free quotes for repair and return delivery. We are constantly re-evaluating our systems to ensure satisfaction for all of our customers.

A Global Company...

...with a Local Presence.



Pro-face Japan

Pro-face America, Inc.

Check out our facility!

Our **FREE** Technical Support site is a vast resource of product and application knowledge designed to help you maximize the value of your Pro-face HMI

- FAQs
- Manuals
- Sample Downloads
- Driver Downloads
- HMI Learning Center
- Application Notes
- Certifications
- Much, Much More...



HMIsource.com/otasuke

Pro-face Australia Pty Ltd



Training

A variety of technical seminars are offered to help customers in order to get the most out of our Pro-face products. Easy-to-understand textbooks are prepared based on what the customer desires to learn.

Technical Support Website

Our free technical support website has been upgraded with services aimed at reducing development man-hours by offering FAQ, Driver Downloads, Manual downloads, Application Notes, and much more.

eCatalog

This app, available on iTunes and Google Play, contains the entire Pro-face product catalog, complete with technical specifications, 360° visuals, CAD drawings, manuals, data sheets, and much more.



Pro-face

for the best interface

We are always striving to connect customers to their clients, processes, and people through high quality products, and service and support from around the world.



ProfaceAmerica.com